



EDGEWATER  
RESIDENCES



DUBAI ISLANDS

EW

EDGEWATER  
RESIDENCES

At **EDGEWATER RESIDENCES** elegance unfolds in every moment.  
**It is not just a home - it is your lifestyle!**



EDGEWATER  
RESIDENCES

WELCOME TO



EDGEWATER  
RESIDENCES

We open the doors to a world of  
luxury and comfort on Dubai Islands



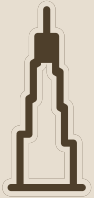
# DUBAI ISLANDS

The prime location of Edgewater Residences also provides residents with easy access to a range of amenities and services



15 mins  
Dubai International Airport

---



20 mins  
Burj Khalifa

---



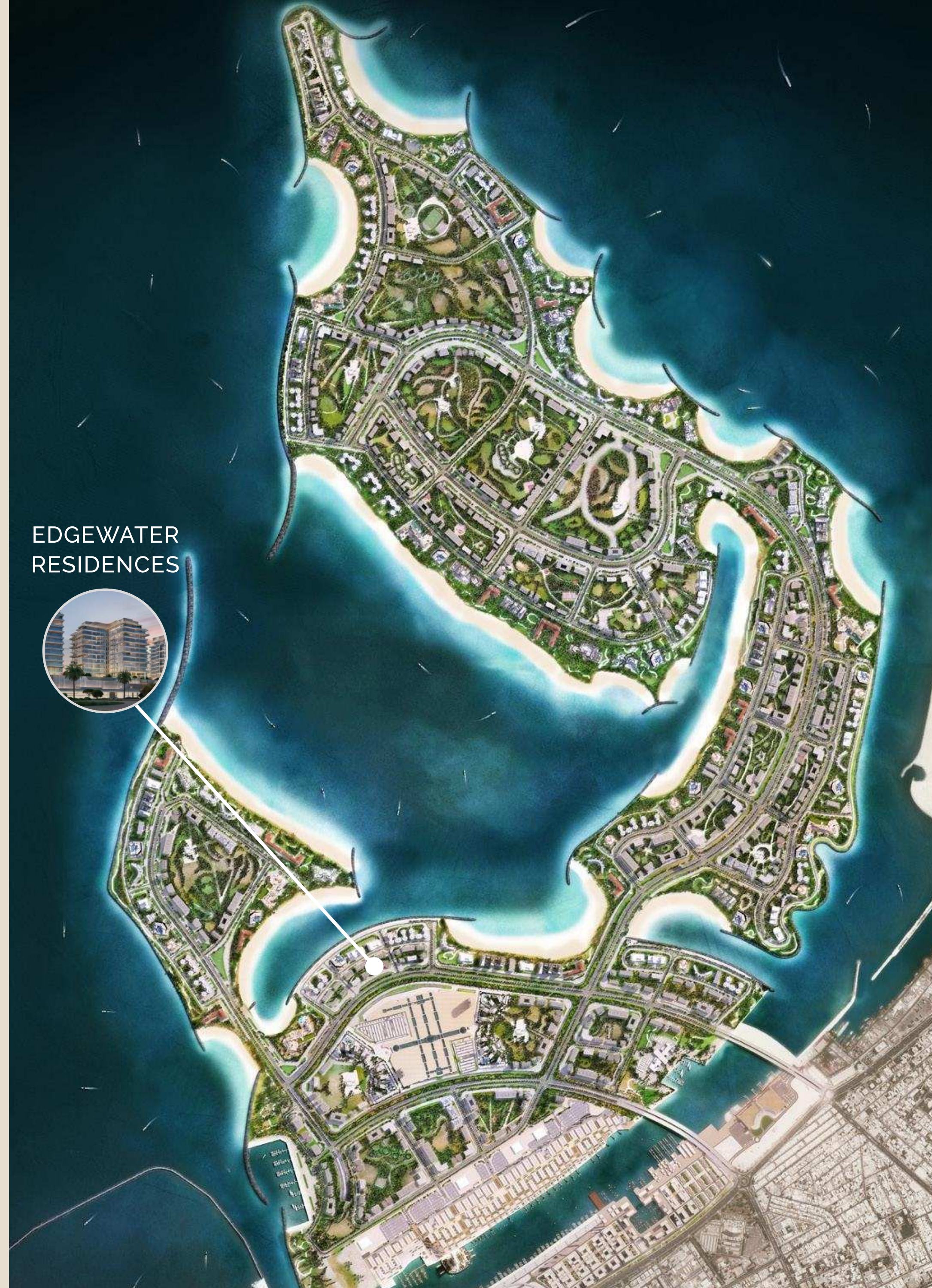
20 mins  
Dubai Mall

---



25 mins  
Burj Al Arab

---





THE WORLD ISLANDS

EDGEWATER RESIDENCES

THE PALM JUMEIRAH

BURJ AL ARAB

DUBAI FRAME

BURJ KHALIFA  
DUBAI MALL

DUBAI INTERNATIONAL AIRPORT

JUMEIRAH

DOWNTOWN

DEIRA

AL BARSHA

THE MEYDAN

CREEK HARBOUR

# ABOUT PROJECT





## Building configuration

Ground floor

2 podium floors

12 residential floors

---

## Unit types

1 bedroom

2 bedroom

3 bedroom

---

## Building amenities

Gym

Kids playing area

Pool

Terraces

Rest zone



EDGEWATER  
RESIDENCES 2

EDGEWATER  
RESIDENCES

EDGEWATER  
RESIDENCES 3



EW

EDGEWATER  
RESIDENCES

## Size range per unit type

### 1 bedroom

from 495,9 sq.ft.

### 2 bedroom

from 981,5 sq.ft.

### 3 bedroom

from 1213,3 sq.ft.

PROJECT HANDOVER  
3 QUARTER OF 2026



# ONE BEDROOM

FLOOR: 2 / 3 / 4 / 5 / 6 / 7 / 8 / 9 / 10 / 11



EDGEWATER  
RESIDENCES

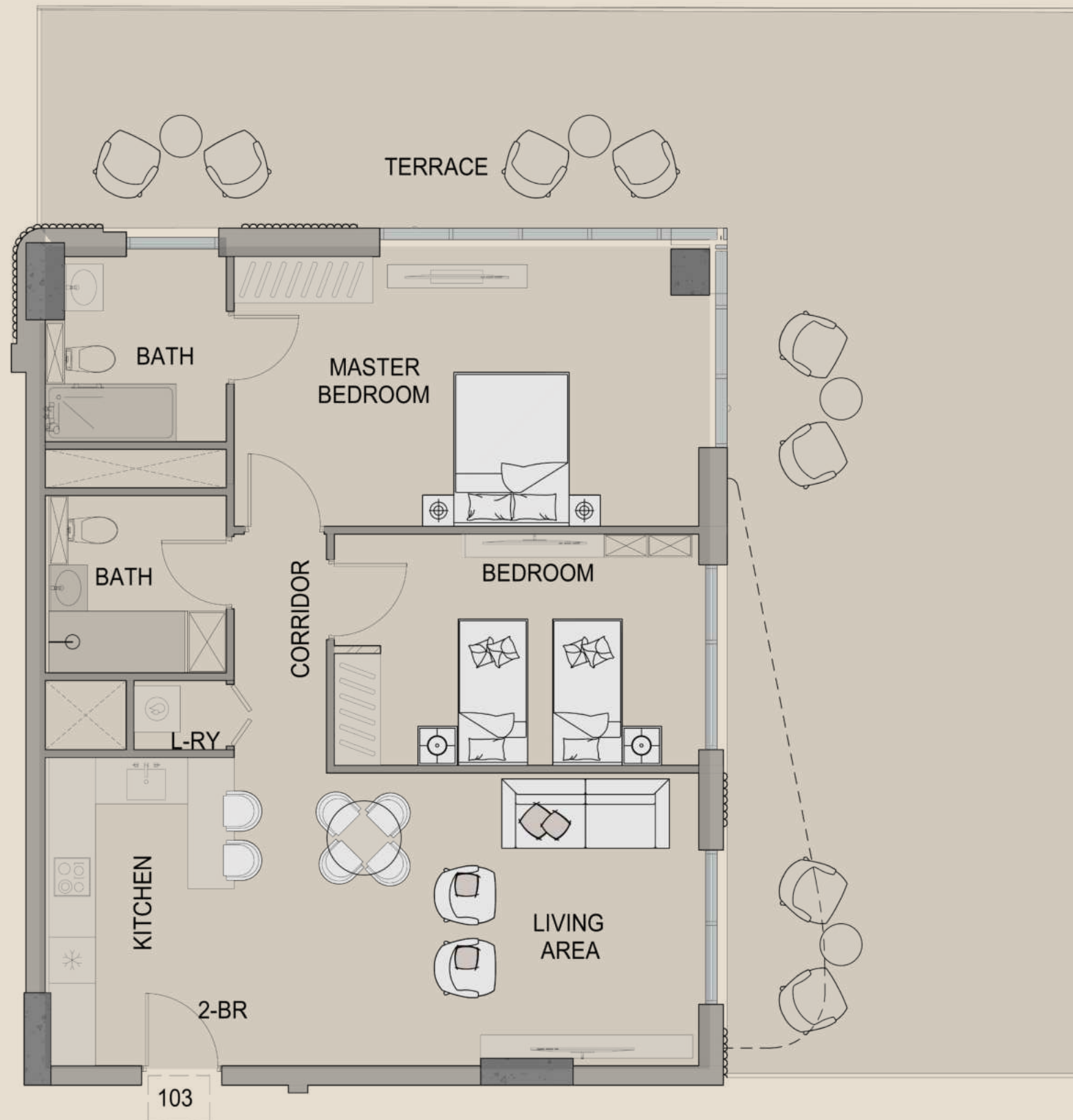


## 1 BR TYPE B

SUIT AREA: 683,9 sq. ft  
BALCONY AREA: 63,3 sq. ft  
TOTAL: 747,2 sq. ft

# TWO BEDROOM

FLOOR: 1



## 2 BR TYPE A

SUIT AREA: 982,7 sq. ft

BALCONY AREA: 1359,6 sq. ft

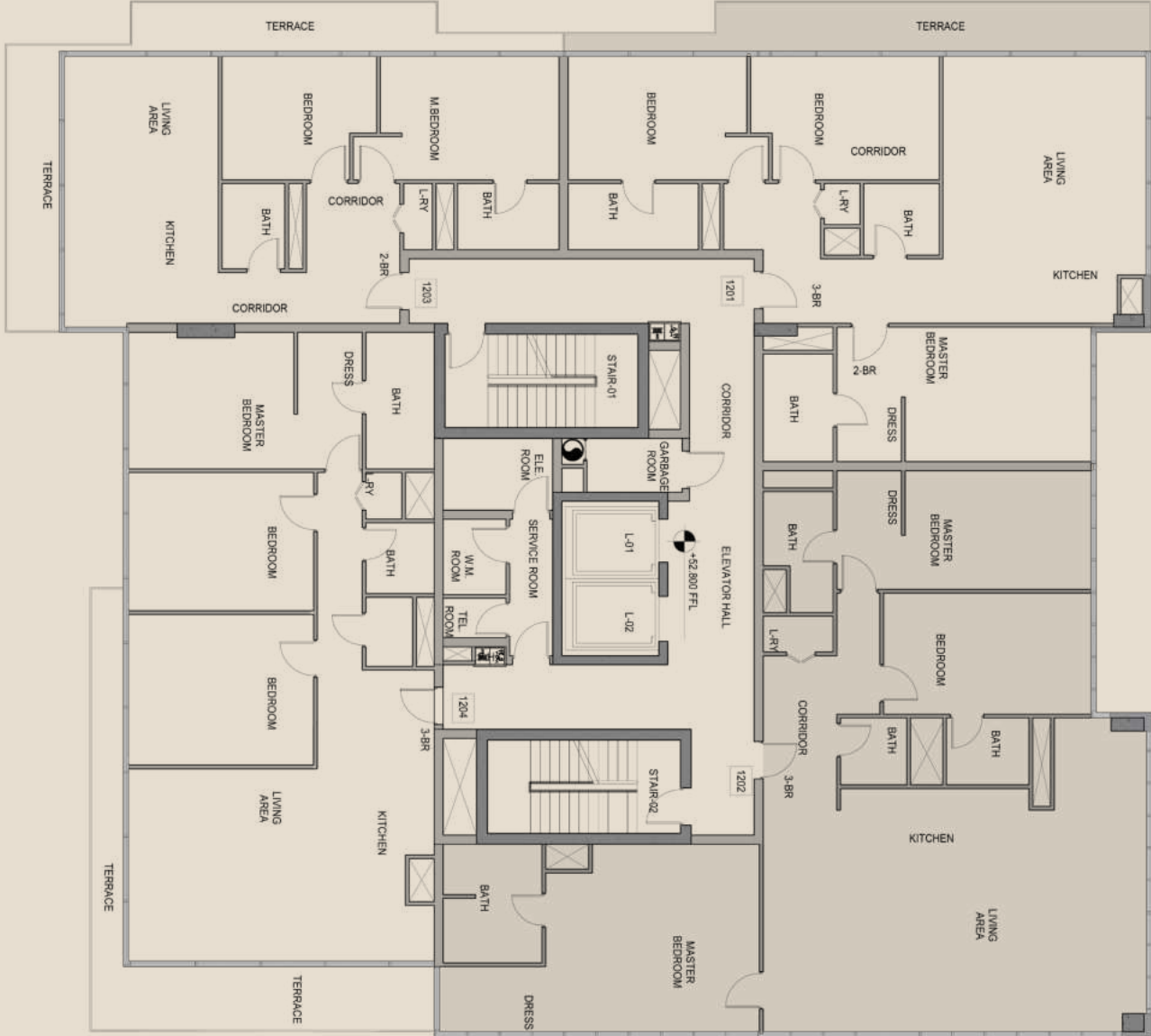
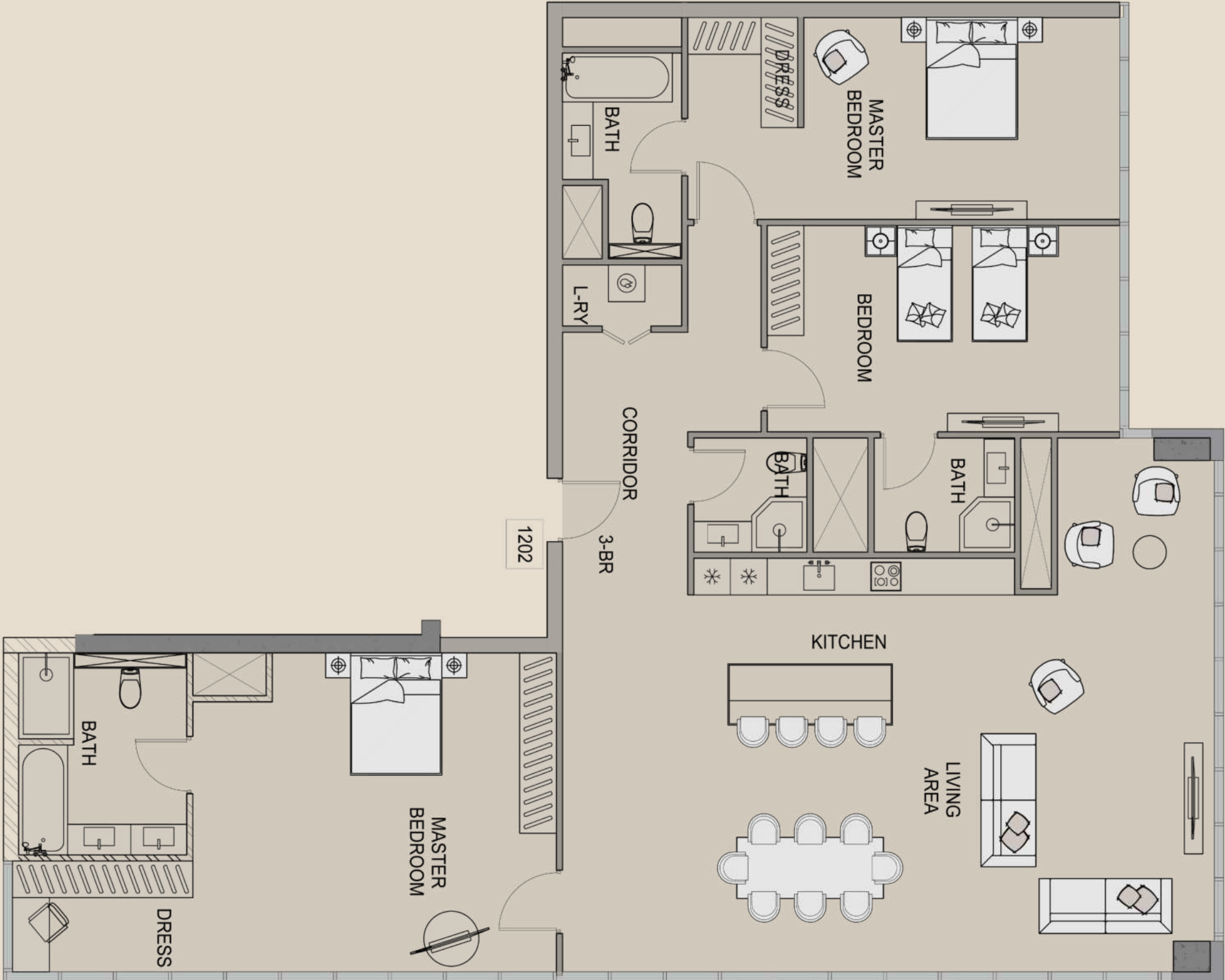
TOTAL: 2342.3 sq. ft

# THREE BEDROOM

FLOOR: 12



EDGEWATER  
RESIDENCES



**3 BR TYPE C**

SUIT AREA: 2185.5 sq. ft

TOTAL: 2185.5 sq. ft

# AMENITIES



EDGEWATER  
RESIDENCES









# APARTMENTS



# Refined from the moment of arrival

Each of the bespoke residential towers of Edgewater Residences feature an elegant lobby with beautiful furnishings

Safe and monitored, the lobbies feature 24/7 security





# Open the doors to luxury living with EDGEWATER RESIDENCES

Exclusive Apartments in the Heart  
of the Dubai Archipelago





Create your COZY RETREAT with  
our MODERN INTERIOR DESIGN



# PAYMENT PLAN

Down payment

10%

First payment

10%

Second payment

5%

Third payment

5%

Fourth payment

10%

Fifth payment

5%

Sixth payment

5%

Seventh payment

5%

Eighth payment

5%

Final payment on Handover

40%





EDGEWATER  
RESIDENCES



+971 528667789

+971 528237789