

# ALTAN

DUBAI CREEK HARBOUR

EMAAR

A wide-angle photograph of the Dubai Creek Harbour skyline at sunset. The sky is a mix of orange, yellow, and blue. The city's lights are beginning to glow, and the water reflects the colors of the sky. In the foreground, a curved, illuminated viewing platform with a glass railing is visible, where several people are standing and looking out at the water. The platform is lit from below, creating a warm glow. The overall scene is a beautiful representation of modern urban architecture and waterfront development.

DUBAI CREEK HARBOUR

Views to Live for



FUTURE OF WATERFRONT LIVING

# Dubai Creek Harbour

Dubai Creek Harbour is a unique waterfront enclave where contemporary luxury, serene nature, and creativity come together. With striking architecture, scenic water views, and the serene Ras Al Khor Wildlife Sanctuary, it offers a dynamic blend of culture, commerce, and tranquillity—shaping the future of urban living.

Enjoy exclusive retail promenades, unwind by the waterfront, or immerse in vibrant cultural hubs, all within reach of your doorstep.

A woman with long brown hair, wearing a bright yellow textured robe, is seated on a balcony. She is holding a white cup in her right hand and an open book on her lap. The balcony has a dark metal railing. In the background, a vast cityscape is visible, with a large body of water in the foreground. To the right, a small table holds a white teapot and a vase with pink flowers. The scene is bathed in soft, natural light, suggesting a peaceful morning or afternoon. The text "Destination for Elevated Living" is overlaid on the right side of the image.

Destination for  
Elevated Living



Creek Promenade

Creek Beach





# Convenience Meets Connectivity

10 mins  
Downtown Dubai

15 mins  
Dubai Int'l Airport

40 mins  
Al Maktoum Int'l Airport

DUBAI METRO LINES  
RED LINE  
GREEN LINE  
FUTURE BLUE LINE

ABU DHABI

SHARJAH

JEBEL ALI FREE ZONE

DUBAI MARINA

PALM ISLAND

EMAAR BEACHFRONT

THE WORLD ISLAND

RASHID YACHTS & MARINA

DUBAI FRAME

BURJ KHALIFA

DOWNTOWN DUBAI

DEIRA

DUBAI INTERNATIONAL AIRPORT

EMIRATES LIVING

AL QUOZ INDUSTRIAL AREA

DUBAI HILLS ESTATE

THE OASIS

DUBAI CREEK HARBOUR

ARABIAN RANCHES I

ARABIAN RANCHES II

THE HEIGHTS

ARABIAN RANCHES III

THE VALLEY

EMAAR SOUTH

AL MAKTOUM INTERNATIONAL AIRPORT

EXPO CITY

DUBAI INVESTMENT PARK

DUBAI POLO & EQUESTRIAN CLUB

EMIRATES ROAD

SHEIKH ZAYED ROAD

SHEIKH MOHAMMED BIN ZAYED ROAD

AL KHAIL ROAD

AL KHAIL ROAD

SHEIKH MOHAMMED BIN ZAYED ROAD

SHEIKH ZAYED BIN HAMDAN AL NAHYAN STREET

DUBAI - AL AIN ROAD

EMIRATES ROAD

EMIRATES ROAD

DUBAI - AL AIN ROAD

EMIRATES ROAD

# DUBAI CREEK HARBOUR

EMAAR



ALTAN —



Welcome to

ALTAN

DUBAI CREEK HARBOUR

Life at Altan is a blissful getaway, where the creek shimmers, the city skyline inspires, and nature invites you to unwind. Glide through calm waters, stroll through vibrant promenades, and find peace in lush gardens. At Altan, home is more than just a place—it's an experience.



Live Inspired,  
Live Limitless



# Balance of Work, Play & Rest

At Altan, everything you need is just moments away—green spaces, schools, shopping, and more, all within reach for a connected lifestyle.



Swimming Pool & Deck



Communal Lawn



Kids Play Area



Co-working Spaces



BBQ & Dining Area



Indoor & Outdoor Gyms



Padel Court



Outdoor Yoga Deck





Swimming Pool



Yoga Deck



Communal Lawn



Kids' Play Area





Park-facing Townhouses



Multi-purpose Zone



## Green Gate – A Calm Escape

Welcome to Green Gate, the latest district within Dubai Creek Harbour featuring sprawling gardens and verdant landscapes. This peaceful enclave offers the perfect balance—an escape from the city's hustle, yet steps away from world-class shopping, dining, and cultural experiences. It's a place where urban life slows down, inviting you to breathe and recharge.



# Designed for Movement, Made for Moments

At Green Gate, every detail is crafted for your comfort and well-being. Stay active at the gym and multi-sport court, unwind by the pool, or enjoy green lawns and outdoor play areas with family. Whether you're hosting friends at the BBQ area, playing a casual game of badminton, or simply soaking in the tranquil surroundings, life here is designed for both vibrancy and relaxation.



Outdoor Fitness



Sports Courts



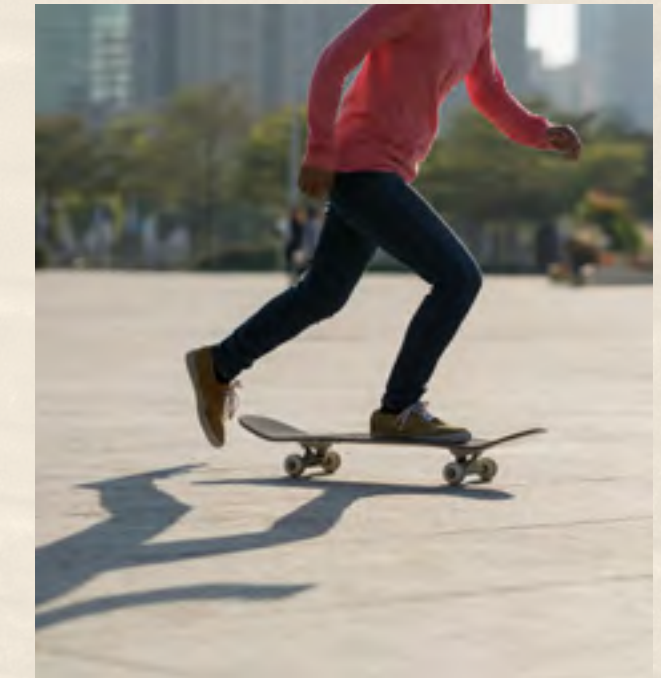
BBQ Areas



F&B Plaza



Kids' Playgrounds



Skate Park



Climbing Wall



Running & Cycling Tracks



Meditation Zone

Wellness,  
Community & Bliss





## Refined Living, Inspired by You

Discover a new standard of living in our 1 to 3-bedroom apartments and 3-bedroom townhouses, where design excellence and functionality come together. Expansive interiors, private rooftop terraces, and immediate access to lush greenery offer the perfect setting for both family life and peaceful relaxation, elevating your everyday experience.









## Designed with Flair

A striking high-ceiling lobby sets the tone for the space, while the kitchens feature stylish cabinetry and sleek worktops. Bedrooms come with custom-built wardrobes, and chic vanities and fixtures enhance the bathrooms, offering a refined living experience that's both convenient and beautiful.





# Global Lifestyle Developer

A leader in the global real estate market, **EMAAR** has grown over the years to become the largest real estate developer out-side of China. You will be investing with one of the best-regarded brands in the world\*.

**114 Bn**

Market Cap AED  
FY 2024

**17.5 Bn**

Net Profit AED  
FY-2024

**35.5 Bn\***

Revenue AED

**10+**

Global Market Presence

**118,400+**

Residential Units  
Delivered Globally

**50,500**

Residential Units Currently  
Under Development

\*As on FY 2024

ALTAN

DUBAI CREEK HARBOUR

EMAAR