

# RAMADA<sup>®</sup>

RESIDENCES BY WYNDHAM  
DUBAI AL JADDAF

A SIGNATURE *Bnw* DEVELOPMENT



*“Seller has entered into a license agreement with Wyndham Hotel Group (UK) Limited to allow the use of the Ramada Residence by Wyndham trademark in connection with the marketing and operation of the Residences. Neither Wyndham Hotel Group (UK) Limited nor any of its affiliates is the owner, seller, developer, or promoter of the Residences. Neither Wyndham Hotel Group (UK) Limited nor any of its affiliates has made or is making any representation or warranty regarding the Residences, and they have not participated in the offering, marketing, or sale of the Residences. All matters relating to the sale, marketing, and development of the Residences are the sole responsibility of the Seller. Wyndham Hotel Group (UK) Limited or its affiliates intends to enter into a Residences Supervisory Services Agreement under which it will supervise, control and direct the provision of certain brand services to the Residences. Notwithstanding this: (i) there are no assurances given as to whether and for how long Wyndham Hotel Group (UK) Limited or its affiliates will continue to be associated with the Residences; and (ii) neither Wyndham Hotel Group (UK) nor any of its affiliates has any responsibility for, and bears no liability whatsoever in relation to, the quality of design, planning, construction of the Residences or gives any representation or warranty of any nature regarding any particular rental return or the profitability of any residential unit that is purchased.”*



COMFORT IS  
NOT A PLACE,  
IT'S A  
WAY OF LIVING



RAMADA

RAMADA  
HOTELS & RESORTS BY STARBUCKS  
SHERATON & HILTON

A SIGNATURE DEVELOPMENT



RAMADA

RAMADA

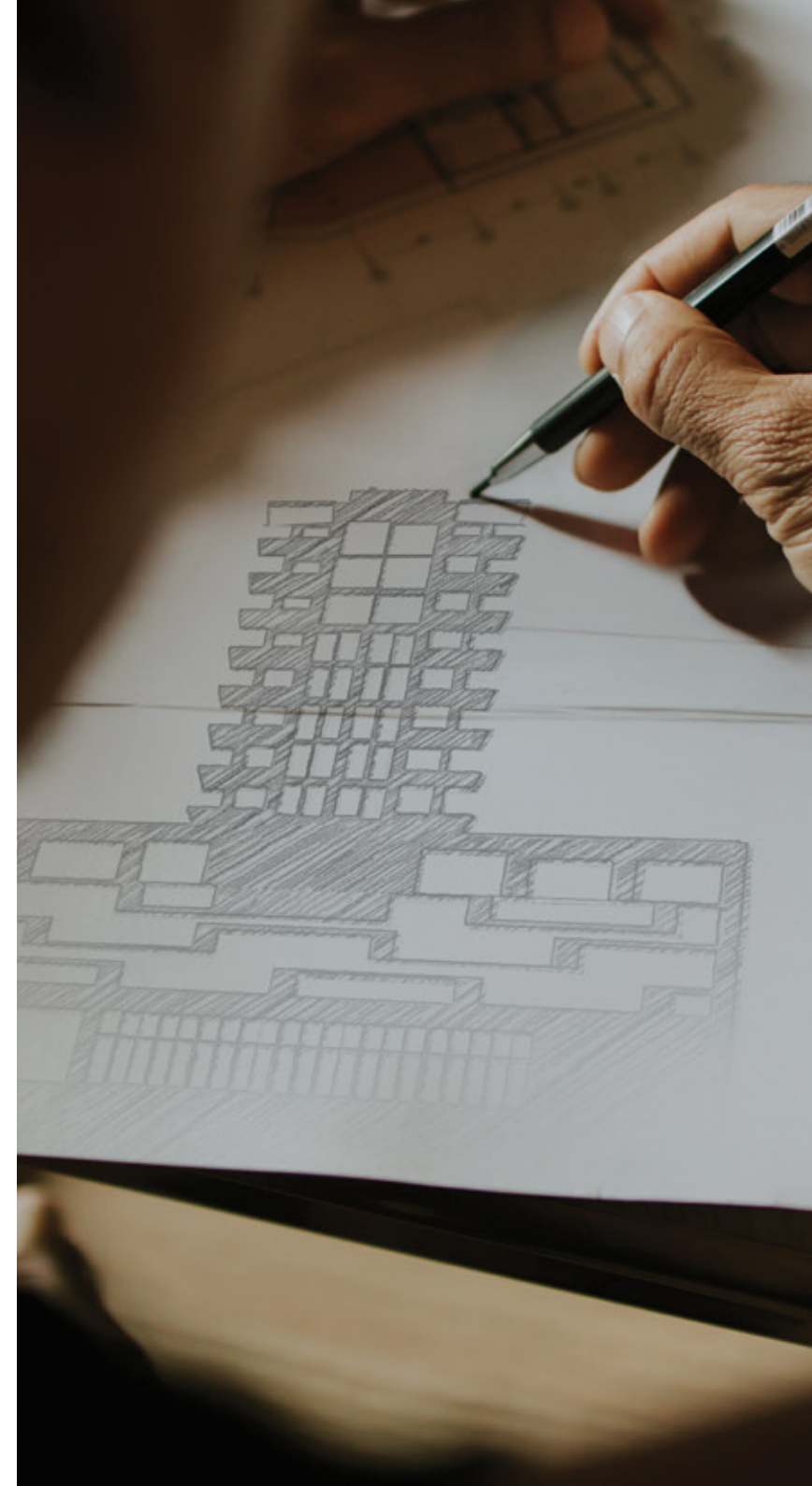
RESIDENCES BY WYNDHAM  
DUBAI AL JADDAF

A SIGNATURE *B* DEVELOPMENT



# AN ARCHITECTURE OF BELONGING, BUILT FOR MEANINGFUL URBAN LIFE

Ramada Residences by Wyndham in Al Jaddaf is not just a development, it's a design dialogue between premium living and purpose. Conceived as an "Architecture of Belonging," the project balances the individuality of private living with the warmth of shared experiences. The planning fuses contemporary aesthetics, fluid circulation, and intention-led materiality to create a retreat within the city. Every design choice, from lobby to landscape, prioritizes comfort as a lived experience, not a visual effect. Here, architecture is not static; it participates in daily life. The result: a spatial narrative where connection, ease, and emotional clarity define the rhythm of living.



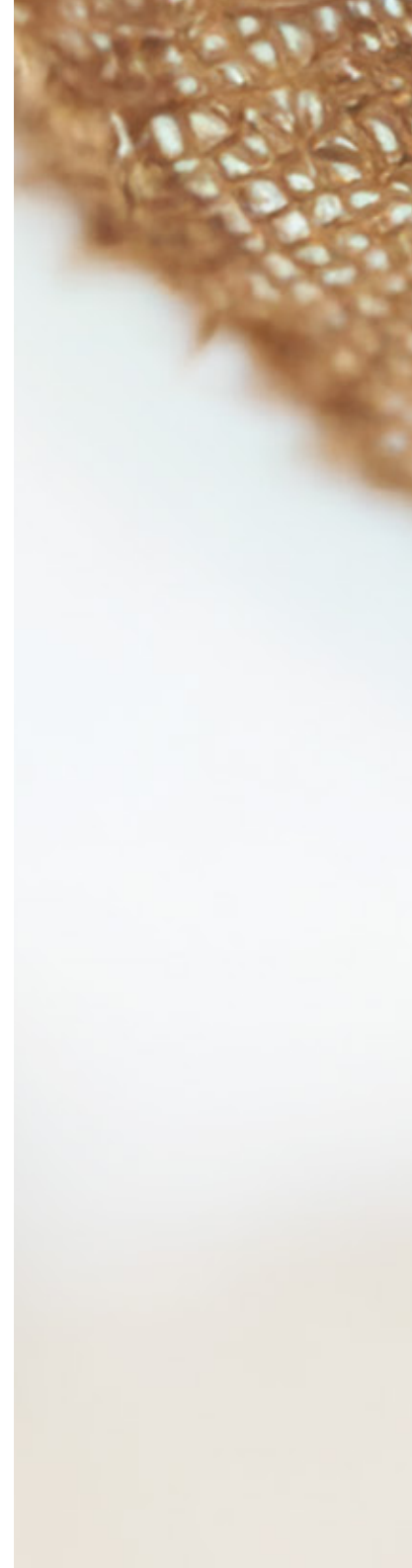


# VERTICAL HARMONY, CRAFTED WITH INTELLIGENT GEOMETRY AND PURPOSEFUL FLOW

Ramada Residences by Wyndham's structure, rising B+G+P+11+R, is a precise choreography of private and public volumes. The design embraces clean, modern lines and a refined façade language that reflects its dual character: residential serenity and urban grace. The podium integrates active zones, while upper floors deliver expansive, thoughtfully configured one and two-bedroom layouts. The reimagined lobby, curated corridors, and intelligent lift core define a consistent user journey. BNW Developments' partnership with Wyndham Hotels & Resorts brings not spectacle, but spatial substance, where every inch performs. It's a living structure that adapts to modern routines and elevates everyday rituals.



COMPOSED FAÇADE  
LINES THAT RISE  
WITH PURPOSE  
AND LIGHT









Zinc

RAMADA  
RESIDENCES BY SPANISH  
DUBAI AL JADID





# PLUNGE DEEP INTO SEAMLESS LIVING

At Ramada Residences by Wyndham, peace of mind begins with place. Tucked within the rhythm of Al Jaddaf, the project offers quietude without compromise. While the world outside hums with access to healthcare, transit, mosques, and retail, the atmosphere within remains calm, composed, and deliberately contained. Residents experience a soft disconnect from urban noise, without losing touch with essentials. Ground-level retail meets daily needs, while elevated zones foster reflection and relaxation. It's a spatial retreat, not a retreat from relevance. The result is rare: a residence that safeguards serenity while keeping life effortlessly within reach.





# THE QUIET CONFIDENCE OF SPACES THAT DON'T NEED TO SHOUT

Finesse at Ramada Residences by Wyndham reveals itself in texture, proportion, and sequence. The Zen Garden isn't ornamental, it's operational serenity. The residents lounge isn't flashy, it's a tactile pause. Interiors avoid cliché finishes and instead lean into curated restraint. With central AC, gas-enabled kitchens, seamless vertical mobility, and a concierge, service and sensibility converge. The gym is unisex; the amenities, inclusive. This is not a maximalist dream, it's a minimalist clarity, where every material, surface, and edge is edited for usability and peace.

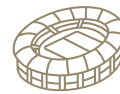




05 Minutes  
Jaddaf Waterfront



08 Minutes  
Latifa Hospital (Al Wasl Hospital)



10 Minutes  
Zabeel Stadium



15 Minutes  
Dubai International Airport



# AMENITIES THAT ENRICH LIFE



Zen Garden



Open Terrace BBQ



Residents' Lounge



Open-Air Theatre



Swimming Pool



Multisport Area



Unisex Gym



Concierge Services



Kids' Play Area



Retail Space



Cozy Cabanas



Electric Car Charging





DAILY RITUALS  
ELEVATED INTO ART,  
MOTION, AND  
MEANINGFUL PAUSE







# WELLNESS EMBEDDED, NOT JUST ADDED ON

Ramada Residences' amenity deck isn't a checklist, it's a curated ecosystem. The Zen Garden acts as a spatial reset, while the 14m x 8m pool offers more than leisure, it offers recalibration. The Residents' Lounge encourages communal downtime without intrusion. Every element is integrated, not imposed. This is architecture that listens to its users: a family seating area for generational exchange, a games space for play that doesn't feel juvenile. Wellness here is quiet, organic, and continuous, woven through the building's very bones.





# CONTEMPORARY BACKDROPS FOR ELEGANT LIVING

Interiors at Ramada Residences by Wyndham are not decorative, they're directive. Floor-to-ceiling heights of 2.7m, efficient zoning, and neutral palettes allow residents to personalize without friction. Interiors resist over-styling, opting for balance: natural light, refined surfaces, and spatial hierarchy. The result is interiors that respect your rhythm, whether you're pausing, working, or hosting. With no visual clutter, the material honesty becomes the real signature. These aren't showpieces; they're frameworks for real life, real emotions, real permanence.



SPACES THAT  
GROW ACROSS  
GENERATIONS,  
AND MOMENTS











*Bnw*  
BNW DEVELOPMENTS  
بنو للتطوير العقاري

# A MODULAR LOGIC FOR REAL LIVES IN MOTION

Ramada Residences by Wyndham offers 66 one-bedroom and 42 two-bedroom units, each framed within an intelligent plan that minimizes waste and maximizes usability. The layouts anticipate movement, privacy, and interaction, bedrooms are shielded from public zones, and kitchens are anchored for both visibility and function. Every apartment comes with dedicated parking, and most offer layered views and acoustic comfort. Whether for individuals, couples, or families, the configurations don't force compromise. They enable life to unfold.





# THE VOCABULARY OF TEXTURE: UNDERSTATED, ENDURING, INTENTIONAL

From the entrance lobby to individual residences, material choices are consistent, credible, and crafted for endurance. Wood accents, composite stone, matte finishes, and soft lighting orchestrate an environment that feels tactile yet restrained. No surface is hyperpolished or hypertrendy. Instead, every texture is a choice, a statement about comfort, wearability, and timelessness. This is material intelligence at work: curated not for catalogue appeal but for actual use, ageing, and living.







MATTE STONE,  
GENTLE GRAIN,  
AND LIGHT THAT  
SOFTLY RESTS



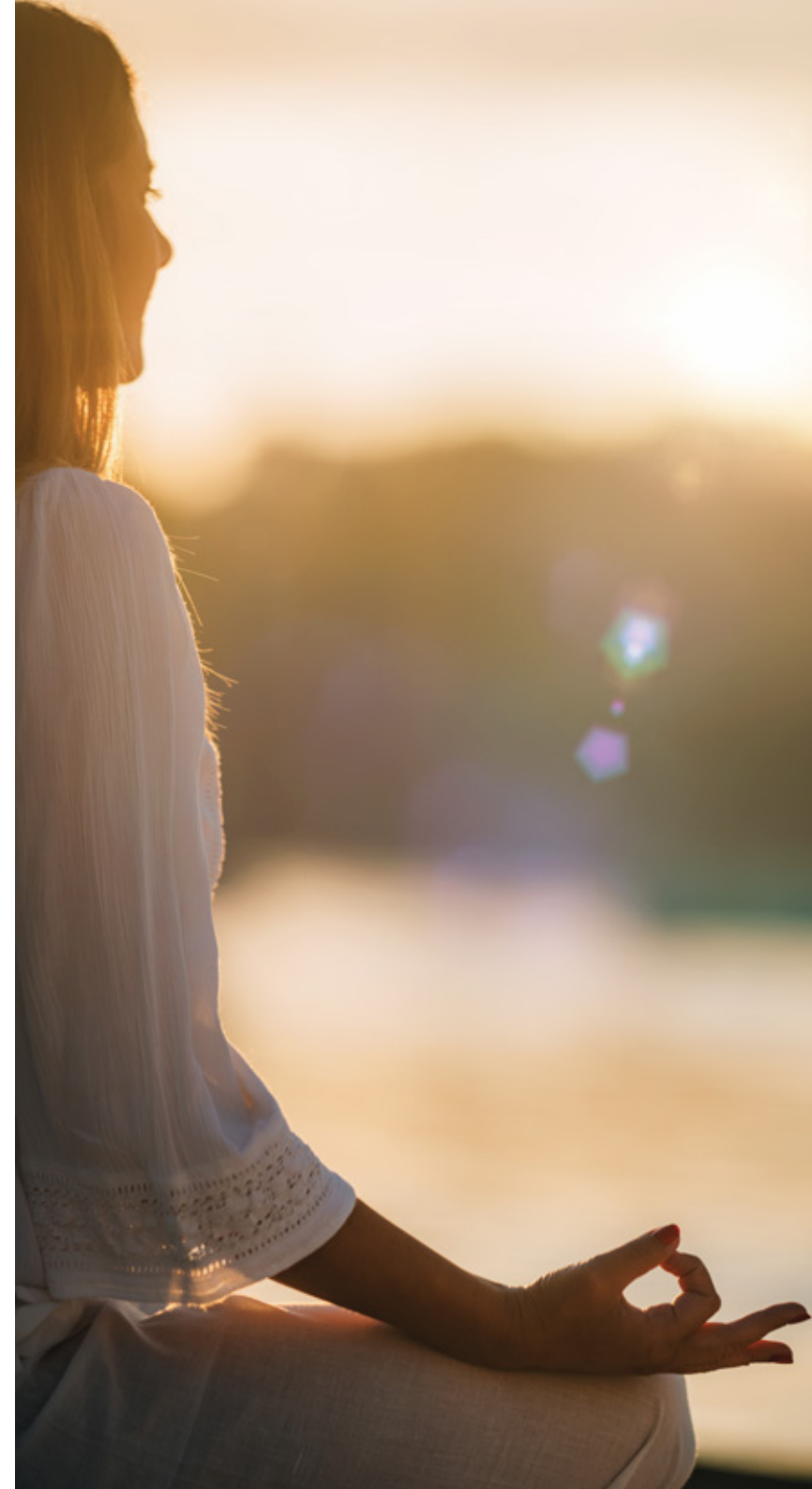


YOU CAN DO IT



# A LIFE ALIGNED WITH URBAN FLOW AND INNER STILLNESS

At Ramada Residences by Wyndham, life doesn't oscillate, it aligns. The day begins with ease: natural light flooding the living space, an efficient commute via nearby transit, and a peaceful return to curated green zones. Children play securely, residents gather casually, and solo moments are uninterrupted. This is a habitat for equilibrium, where neither urban ambition nor personal peace is compromised. Every inch of Ramada Residences is designed to accommodate ambition, nurture connection, and preserve solitude when needed. The perfect life is not aspirational here, it's architectural.





# RAMADA RESIDENCES BY WYNDHAM IS WHERE DESIGN IS A LIVING DIALOGUE

This project stands as a landmark collaboration between BNW Developments and Wyndham Hotels & Resorts, setting a new standard in Dubai's residential narrative. Located at AlJaddaf, Ramada Residences by Wyndham isn't just about owning a home, it's about inhabiting a thoughtful experience. With intelligent design, timeless materials, and wellness-focused amenities, the project offers more than real estate, it offers resonance. Every corner is calibrated, every experience intentional. It is, at its essence, residential architecture not just built, but felt. Here, you don't just reside. You relate.







# THE ART OF SERVICE, PERFECTED FOR YOU



Building Management Services



Onsite Spa



General Cleaning Services



Chauffeur Drive Services



Laundry & Dry Cleaning



Personal Trainer



Airport Transfers



In-Residence Dining & Private Chef



Babysitting and Childcare



Maintenance Services



Pool & Lifeguard Services



Security Services

# UNIT PLANS

# 1 BHK - TYPE 1

UNIT 203



1	Kitchen	2.4m x 2.4m
2	Living	4m x 5.2m
3	PWD Room	1.3m x 1.9m
4	Bedroom	4m x 4.2m
5	Bath	2.6m x 2.1m
6	Balcony	1.9m x 3.9m
7	Balcony	1.4m x 4m

<b>Suite Area</b>	66.25 sq.m	to	66.24 sq.m
	713.11 sq.ft	to	713 sq.ft
<b>Balcony Area</b>	15.54 sq.m	to	91 sq.m
	167.27 sq.ft	to	979.52 sq.ft
<b>Total Area</b>	81.79 sq.m	to	157.24 sq.m
	880.38 sq.ft	to	1692.52 sq.ft



Key Plan : Second Floor

# 1 BHK - TYPE 2

UNIT 204



1	Kitchen	2.4m x 2.7m
2	Living	4m x 5.4m
3	PWD Room	1.4m x 2.4m
4	Bedroom	4m x 4.1m
5	Bath	2.3m x 2.1m
6	Dress	1.7m x 1.1m
7	Balcony	4m x 1.4m

<b>Suite Area</b>	68.64 sq.m	to	68.65 sq.m
	738.83 sq.ft	to	738.94 sq.ft
<b>Balcony Area</b>	6.7 sq.m	to	68.26 sq.m
	72.12 sq.ft	to	734.74 sq.ft
<b>Total Area</b>	75.34 sq.m	to	136.91 sq.m
	810.95 sq.ft	to	1473.69 sq.ft



Key Plan : Second Floor

Disclaimer: All dimensions, materials and drawings are approximate. Information is subject to change without notice, at the developer's absolute discretion. The actual area may vary from the stated area. Drawings are not to scale. All images used are for illustrative purposes only and do not represent the actual size, features, specifications, fittings and furnishings. The developer reserves the right to make revisions/alterations, at the absolute discretion without any liability whatsoever.

# 1 BHK - TYPE 3

UNIT 205



1	Kitchen	2.5m x 2.4m
2	Living	4m x 5.2m
3	PWD Room	1.3m x 1.9m
4	Bedroom	4m x 4.1m
5	Bath	2.6m x 2.2m
6	Balcony	1.1m x 3.9m
7	Balcony	1.4m x 4m

<b>Suite Area</b>	65.9 sq.m	to	65.9 sq.m
	709.34 sq.ft	to	709.34 sq.ft
<b>Balcony Area</b>	12.2 sq.m	to	81.39 sq.m
	131.32 sq.ft	to	876.07 sq.ft
<b>Total Area</b>	78.1 sq.m	to	147.29 sq.m
	840.66 sq.ft	to	1585.42 sq.ft



Key Plan : Second Floor

Disclaimer: All dimensions, materials and drawings are approximate. Information is subject to change without notice, at the developer's absolute discretion. The actual area may vary from the stated area. Drawings are not to scale. All images used are for illustrative purposes only and do not represent the actual size, features, specifications, fittings and furnishings. The developer reserves the right to make revisions/alterations, at the absolute discretion without any liability whatsoever.

# 1 BHK - TYPE 4

UNIT 208



1	Kitchen	2.4m x 2.4m
2	Living	4m x 5.2m
3	PWD Room	1.3m x 1.9m
4	Bedroom	4.1m x 4m
5	Bath	2.1m x 2.6m
6	Balcony	4m x 1.3m

<b>Suite Area</b>	64.8 sq.m	to	64.81 sq.m
	697.5 sq.ft	to	697.61 sq.ft
<b>Balcony Area</b>	6.56 sq.m	to	69.51 sq.m
	70.61 sq.ft	to	748.2 sq.ft
<b>Total Area</b>	71.36 sq.m	to	134.32 sq.m
	768.11 sq.ft	to	1445.81 sq.ft



Key Plan : Second Floor

Disclaimer: All dimensions, materials and drawings are approximate. Information is subject to change without notice, at the developer's absolute discretion. The actual area may vary from the stated area. Drawings are not to scale. All images used are for illustrative purposes only and do not represent the actual size, features, specifications, fittings and furnishings. The developer reserves the right to make revisions/alterations, at the absolute discretion without any liability whatsoever.

# 1 BHK - TYPE 5

UNIT 209



1	Kitchen	2.5m x 2.4m
2	Living	4m x 5.7m
3	Bedroom	4m x 4.2m
4	Bath	2.1m x 2.4m
5	Dress	1.8m x 1.2m
6	Balcony	1.3m x 3.9m

<b>Suite Area</b>	65.6 sq.m	to	65.61 sq.m
	706.11 sq.ft	to	706.22 sq.ft
<b>Balcony Area</b>	6.4 sq.m	to	61.17 sq.m
	68.89 sq.ft	to	658.43 sq.ft
<b>Total Area</b>	72 sq.m	to	126.78 sq.m
	775 sq.ft	to	1364.65 sq.ft



Key Plan : Second Floor

# 1 BHK - TYPE 6

UNIT 210



1	Kitchen	2.4m x 2.4m
2	Living	4m x 5.2m
3	PWD Room	1.3m x 1.9m
4	Bedroom	4.1m x 4m
5	Bath	2.1m x 2.6m
6	Balcony	1.3m x 4m

<b>Suite Area</b>	64.52 sq.m	to	64.52 sq.m
	694.49 sq.ft	to	694.49 sq.ft
<b>Balcony Area</b>	6.56 sq.m	to	75.85 sq.m
	70.61 sq.ft	to	816.44 sq.ft
<b>Total Area</b>	71.08 sq.m	to	140.37 sq.m
	765.1 sq.ft	to	1510.93 sq.ft



Key Plan : Second Floor

# 2 BHK - TYPE 1

UNIT 207



1	Kitchen	2.3m x 3.0m
2	Living	4.0m x 8.1m
3	PWD Room	1.6m x 1.7m
4	Bedroom	4.0m x 3.6m
5	Bath	2.6m x 2.1m
6	Master Bedroom	3.6m x 4.1m
7	Bath	2.3m x 2.6m
8	Balcony	5.1m x 5.5m

<b>Suite Area</b>	106.5 sq.m	to	106.5 sq.m
	1146.36 sq.ft	to	1146.36 sq.ft
<b>Balcony Area</b>	17.16 sq.m	to	227.78 sq.m
	184.71 sq.ft	to	2451.8 sq.ft
<b>Total Area</b>	123.66 sq.m	to	334.28 sq.m
	1331.07 sq.ft	to	3598.16 sq.ft



Key Plan : Second Floor

## 2 BHK - TYPE 2

### UNIT 202



1	Kitchen	2.3m x 3.0m
2	Living	4.0m x 8.1m
3	PWD Room	1.4m x 1.8m
4	Master Bedroom	4.2m x 4.0m
5	Bath	3.2m x 2.1m
6	Bedroom	3.6m x 4.1m
7	Bath	2.1m x 2.6m
8	Balcony	5.1m x 5.5m
9	Balcony	1.4m x 3.8m

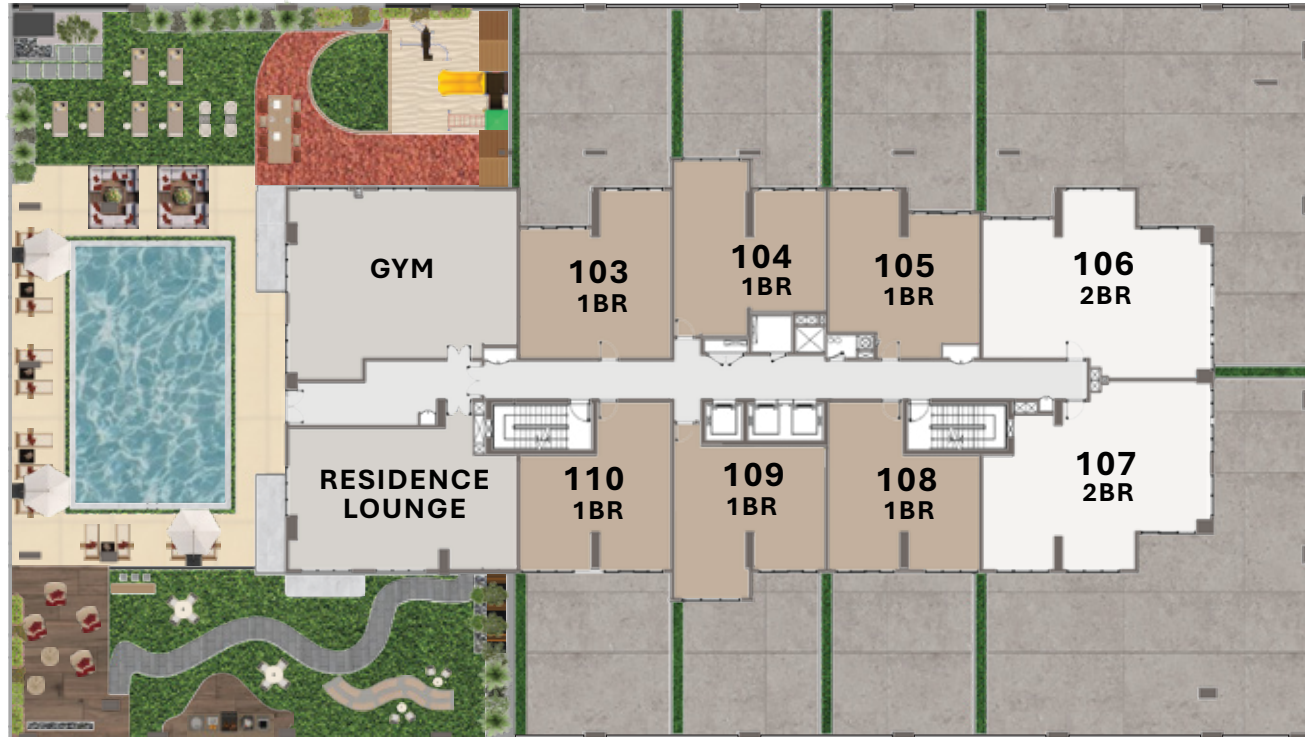
<b>Suite Area</b>	107.8 sq.m	to	107.64 sq.m
	1160.35 sq.ft	to	1158.63 sq.ft
<b>Balcony Area</b>	23.45 sq.m	to	245.1 sq.m
	252.41 sq.ft	to	2638.23 sq.ft
<b>Total Area</b>	131.25 sq.m	to	352.74 sq.m
	1412.76 sq.ft	to	3796.86 sq.ft



Key Plan : Second Floor

# FLOOR PLANS

# FIRST FLOOR PLAN

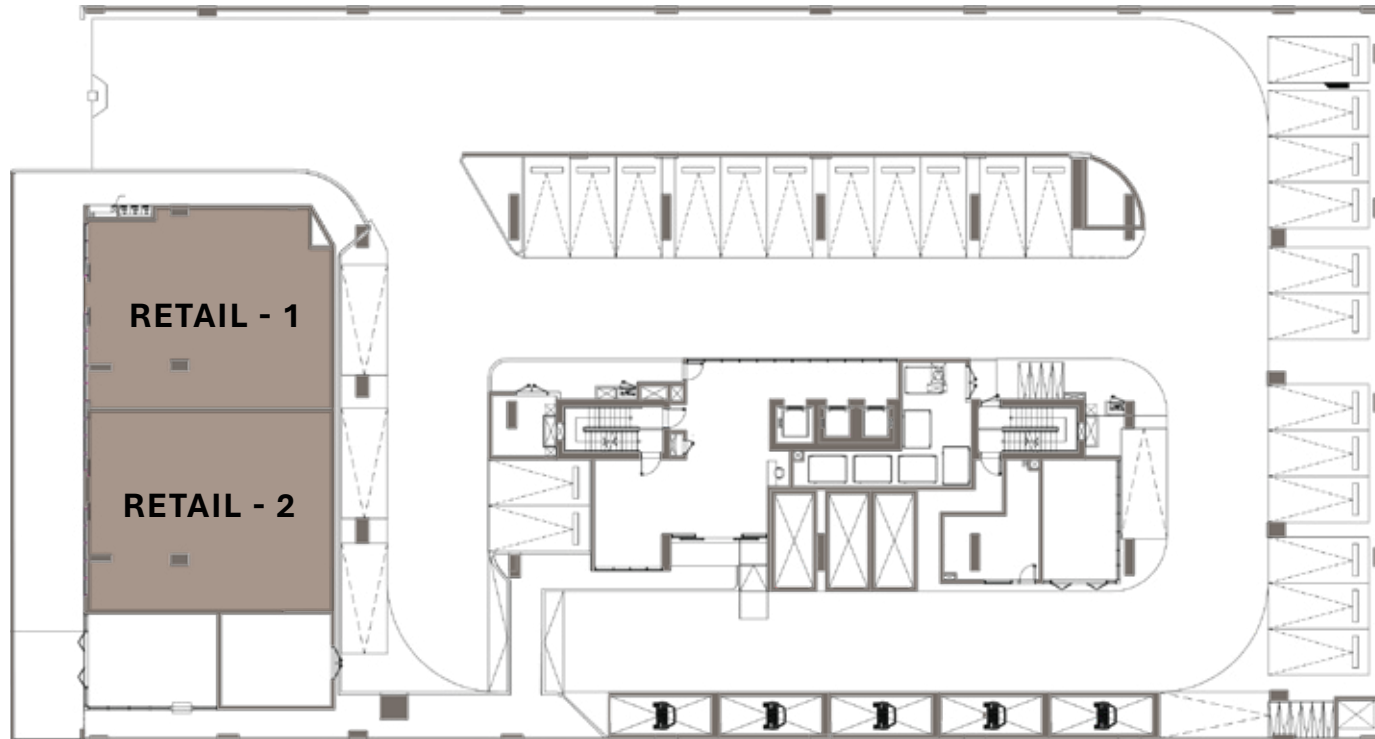


● 1BHK

● 2BHK

Disclaimer: All dimensions, materials and drawings are approximate. Information is subject to change without notice, at the developer's absolute discretion. The actual area may vary from the stated area. Drawings are not to scale. All images used are for illustrative purposes only and do not represent the actual size, features, specifications, fittings and furnishings. The developer reserves the right to make revisions/alterations, at the absolute discretion without any liability whatsoever.

# GROUND FLOOR PLAN



● RETAIL

Disclaimer: All dimensions, materials and drawings are approximate. Information is subject to change without notice, at the developer's absolute discretion. The actual area may vary from the stated area. Drawings are not to scale. All images used are for illustrative purposes only and do not represent the actual size, features, specifications, fittings and furnishings. The developer reserves the right to make revisions/alterations, at the absolute discretion without any liability whatsoever.

# TYPICAL (2<sup>ND</sup> TO 11<sup>TH</sup> FLOOR) FLOOR PLAN



● 1BHK

● 2BHK

Disclaimer: All dimensions, materials and drawings are approximate. Information is subject to change without notice, at the developer's absolute discretion. The actual area may vary from the stated area. Drawings are not to scale. All images used are for illustrative purposes only and do not represent the actual size, features, specifications, fittings and furnishings. The developer reserves the right to make revisions/alterations, at the absolute discretion without any liability whatsoever.

