

# YIGC • 26

23

Years in  
Business

05

Destinations

+100

Masterpieces

3\$bn

Portfolio



A long, empty hallway with a glowing oval light fixture on the ceiling and a bright opening at the end of the path. The walls and floor are made of stone or concrete, and the lighting is warm and dramatic.

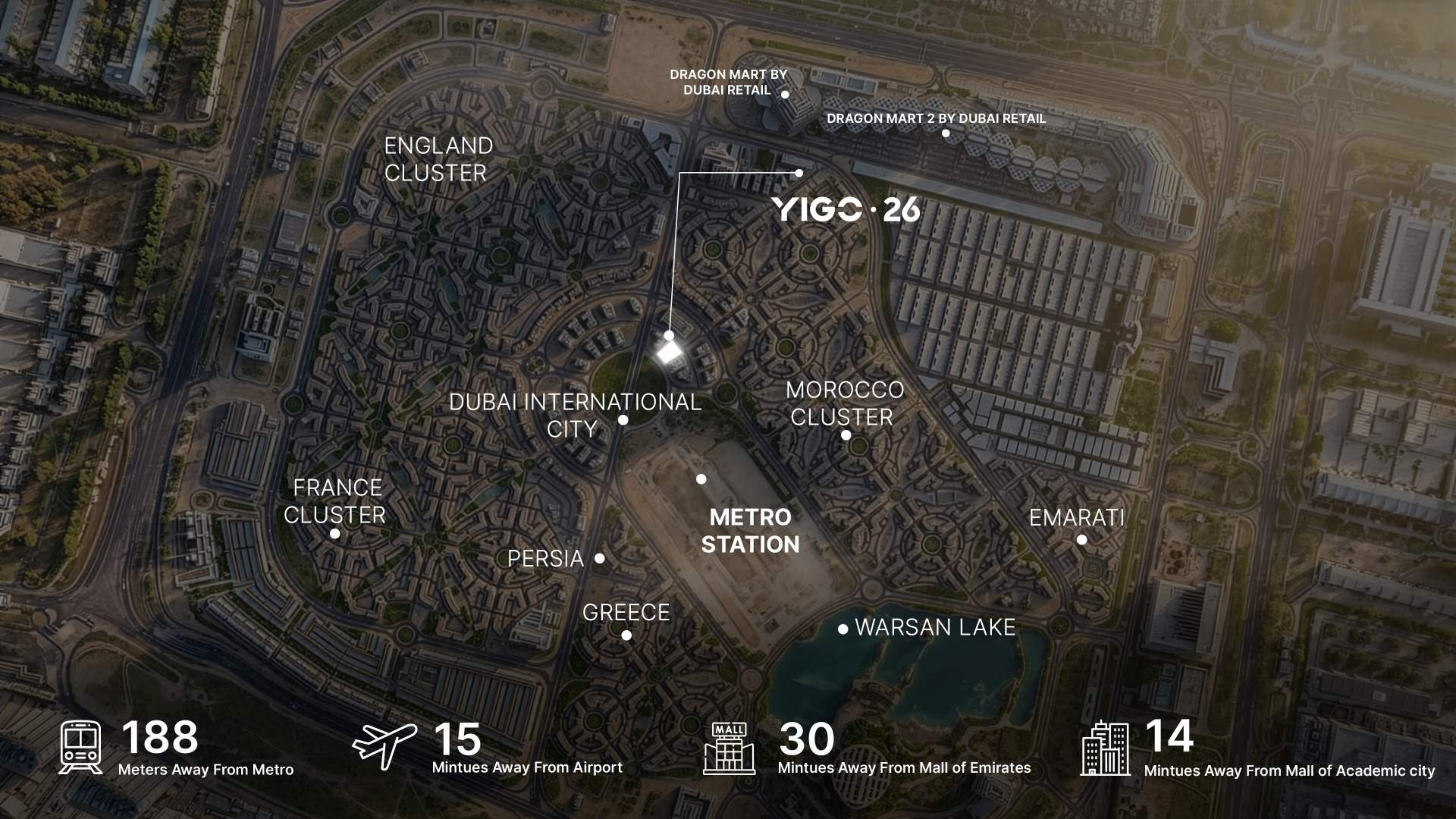
## THE YIGO JOURNEY: HONG KONG - GLOBAL

Born in Hong Kong at the crossroads of East and West, YIGO embodies a spirit of vision, resilience, and action for the future. With global experience and innovative thinking, we create spaces that respond to each city's unique needs - redefining how the world lives.



## A SYMPHONY OF LIGHT, SPACE, AND STILLNESS

Within the rhythm of the city lies a sanctuary of light, space, and serenity. Yigo residence at International City is an ode to balance - where design breathes, light flows, and life unfolds effortlessly amid calm sophistication.



DRAGON MART BY DUBAI RETAIL

DRAGON MART 2 BY DUBAI RETAIL

ENGLAND CLUSTER

YIGC · 26

DUBAI INTERNATIONAL CITY

MOROCCO CLUSTER

FRANCE CLUSTER

METRO STATION

EMARATI

PERSIA

GREECE

WARSAN LAKE



188

Meters Away From Metro



15

Mintues Away From Airport



30

Mintues Away From Mall of Emirates



14

Mintues Away From Mall of Academic city



## THE STILLNESS OF MODERN LIVING

More than a structure, this is a composition of grace and purpose. From the rhythm of its curves to the warmth of its spaces, YIGO's debut Dubai residence redefines modern living through artistry that inspires and endures.



Rooted in Hong Kong craftsmanship and refined for Dubai's skyline, YIGO's design philosophy celebrates precision and poetry in equal measure. Each home reflects an architectural balance — between innovation, elegance, and timeless restraint.

Bathed in light and guided by geometry, the architecture finds beauty in simplicity. Every line, every curve, every shadow tells a story — one of connection, clarity, and the art of truly modern living.

# A PLACE TO BELONG

Step into a home designed for comfort, calm, and connection. Every residence is thoughtfully curated with modern smart furnishings that merge style with functionality, creating spaces that adapt effortlessly to the rhythm of daily life. Soft textures, natural tones, and contemporary design elements come together to evoke a sense of warmth and belonging — a home that feels lived in from the moment you arrive. Here, sophistication meets simplicity, turning everyday living into a quiet expression of modern elegance.



YIGC · 26



8F

- RISKY GARDEN
- 11 SWIMMING POOL
- 6 LOBBY
- 8 PARKING



B  
F

B F SKY GARDEN  
T F SWIMMING POOL  
G F LOBBY  
H F PARKING

1001 - 1002  
1003 - 1004

1001

1006 - 1009  
1001 - 1005

1001



1006 — 1009  
1001 — 1005















YIGC · 26



YIGC·26







14:43

# Amenities

---



GYM



SPORTS



RECEPTION HALL



YOGA ROOM



READING ZONE



SWIMMING POOL



ROOFTOP GARDEN



BBQ AREA



PLAY AREA

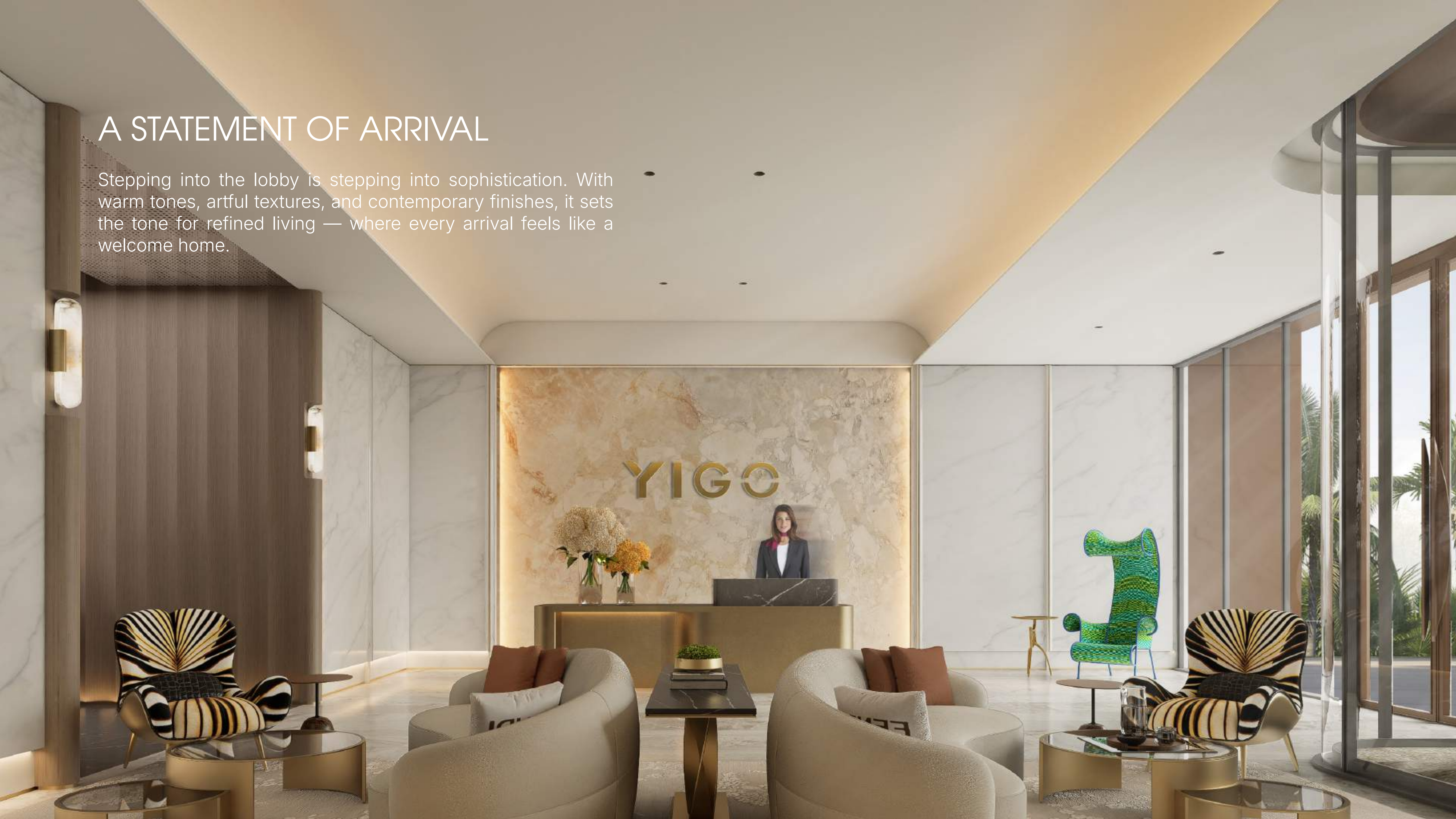


MEDITATION ROOM



# A STATEMENT OF ARRIVAL

Stepping into the lobby is stepping into sophistication. With warm tones, artful textures, and contemporary finishes, it sets the tone for refined living — where every arrival feels like a welcome home.



## MOMENTS OF CONNECTION

Thoughtfully designed for casual gatherings and quiet conversations, the community lounge is where residents naturally come together. Elegant interiors, warm lighting, and comfortable seating create an inviting atmosphere — a space to unwind, connect, or simply enjoy the rhythm of everyday life.



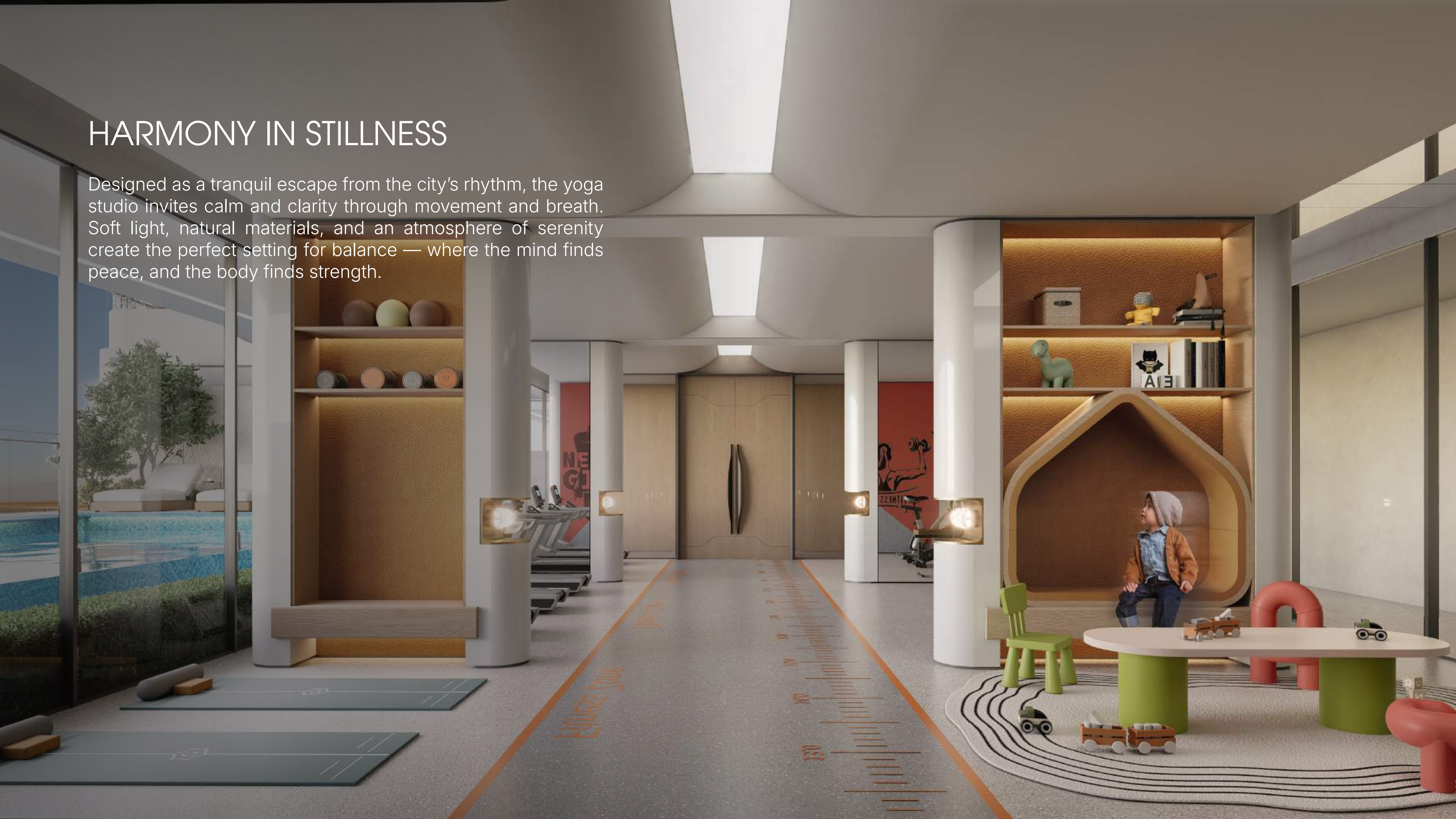
# STRENGTH IN MOTION

A space designed for balance and vitality. The fitness studio offers state-of-the-art equipment and a calm, sunlit ambiance — where every workout becomes a moment of renewal, and every movement a step toward harmony.



# HARMONY IN STILLNESS

Designed as a tranquil escape from the city's rhythm, the yoga studio invites calm and clarity through movement and breath. Soft light, natural materials, and an atmosphere of serenity create the perfect setting for balance — where the mind finds peace, and the body finds strength.



# WHERE SERENITY MEETS REFLECTION

The pool area evokes resort-like calm with tranquil waters and open vistas. Whether for morning laps or twilight leisure, it's a place to pause, refresh, and rediscover balance.



YIGC · 26

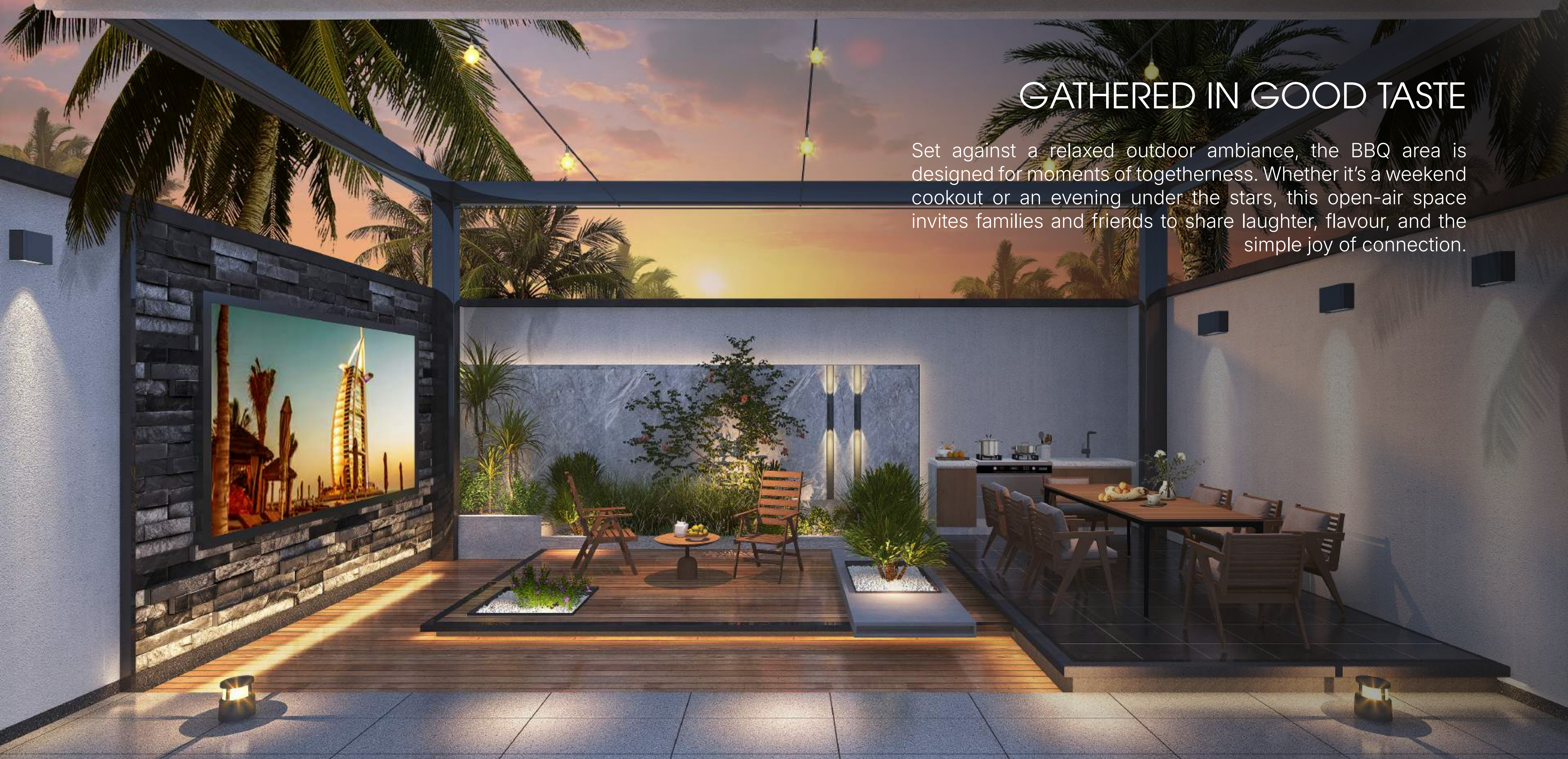
# THE GAME OF PRECISION

More than sport — it's rhythm, strategy, and flow. The padel court invites residents to play, connect, and unwind within a modern arena built for energy and recreation.



# GATHERED IN GOOD TASTE

Set against a relaxed outdoor ambiance, the BBQ area is designed for moments of togetherness. Whether it's a weekend cookout or an evening under the stars, this open-air space invites families and friends to share laughter, flavour, and the simple joy of connection.



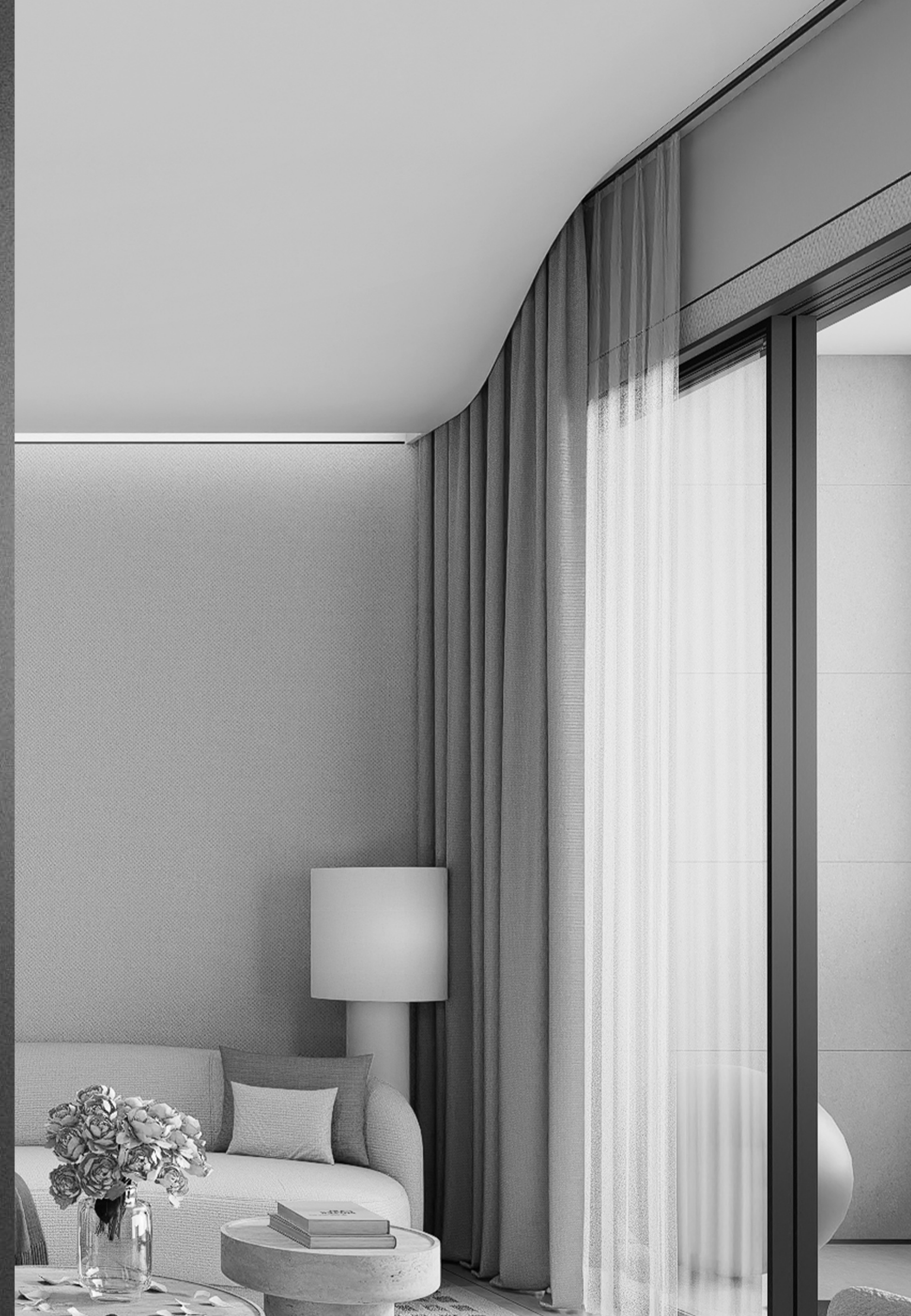
# ABOVE THE CITY, BENEATH THE SKY

An elevated sanctuary of calm, the rooftop garden offers sweeping views and moments of quiet retreat. Lush greenery, soft seating, and open horizons create a serene escape where residents can unwind, reflect, or simply enjoy the beauty of Dubai's skyline surrounded by nature's stillness.



# Floor Plans

---





YIGC · 26

+48.25m

+42.25m

+40.25m FFL  
ROOF FLOOR LVL.

+36.65m FFL  
10TH FLOOR LVL.

+33.05m FFL  
9TH FLOOR LVL.

+29.45m FFL  
8TH FLOOR LVL.

+25.85m FFL  
7TH FLOOR LVL.

+22.25m FFL  
6TH FLOOR LVL.

+18.65m FFL  
5TH FLOOR LVL.

+15.05m FFL  
4TH FLOOR LVL.

+11.45m FFL  
3RD FLOOR LVL.

+7.85m FFL  
2ND FLOOR LVL.

+4.25m FFL  
1ST FLOOR LVL.

+0.15m FFL  
GATE LVL  
±0m FFL

**Development Type:**  
Mixed-Use

**Number of Floors:**  
2B+G+10Floors

**Total Units:**  
186Residential Units+4Retails

**Unit Types:**  
Studios:30 Units  
1BHK with Study:154 Units  
2BHK with Study:2 Units

**Parking Levels:**  
B1, B2

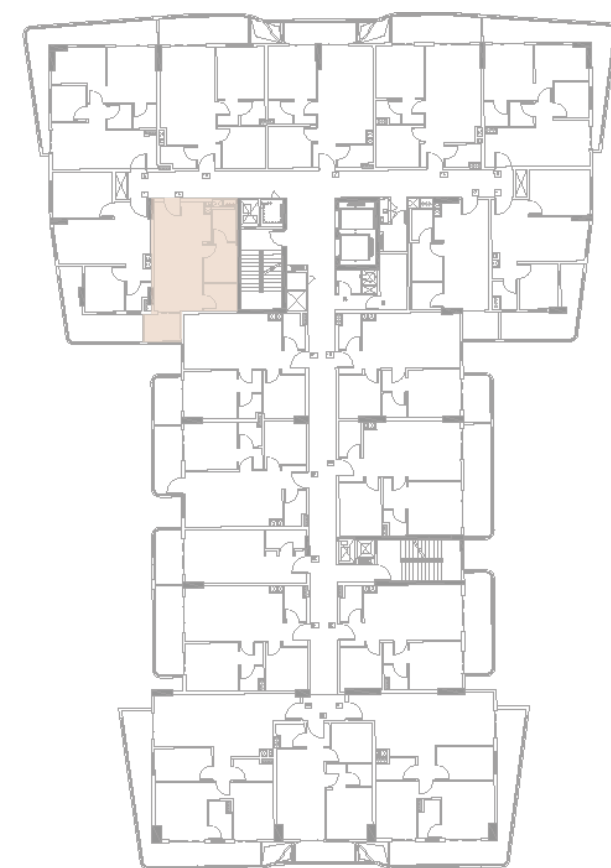
**Anticipated Completion Date:**  
Q4 2027

# STUDIO 01

ARCHITECTURE



1 FLOOR



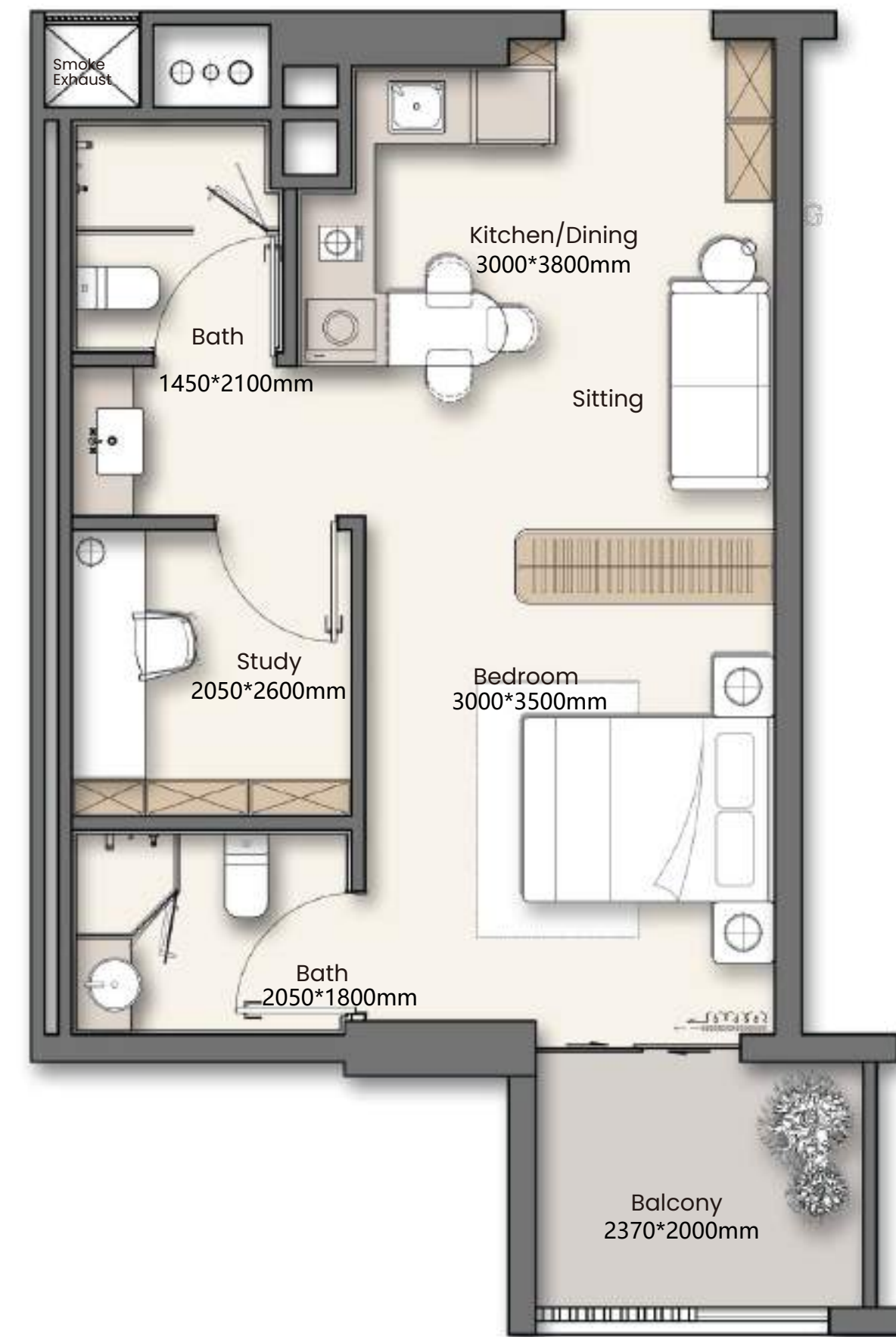
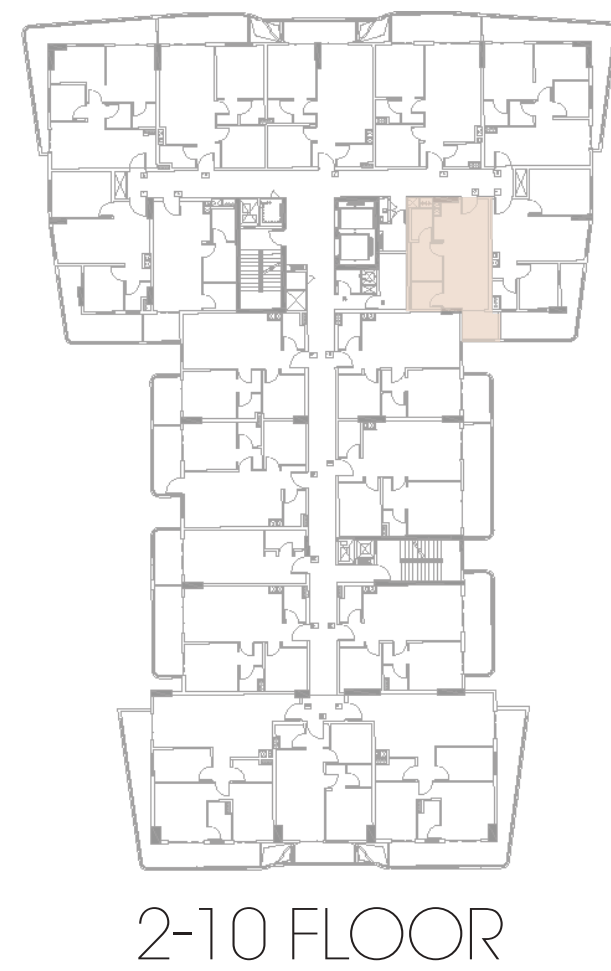
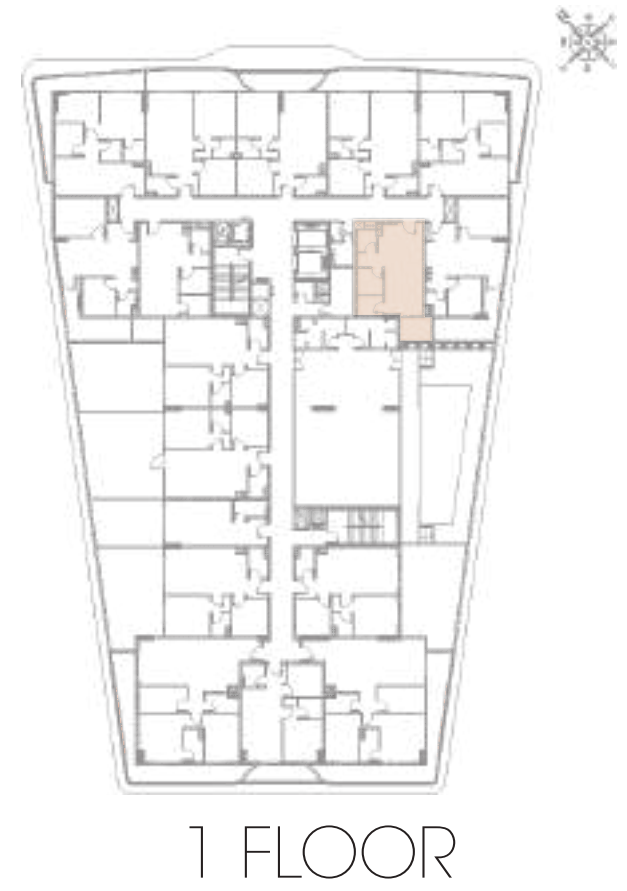
2-10 FLOOR



	Buildup Area	Balcony	Total Area
1-17	41.93m <sup>2</sup> /451.33ft	5.15m <sup>2</sup> /55.43ft	47.08m <sup>2</sup> /506.76ft
2/3/4/5/6/7/8/9-19	41.93m <sup>2</sup> /451.33ft	5.21m <sup>2</sup> /56.08ft	47.14m <sup>2</sup> /507.41ft
10-17	41.93m <sup>2</sup> /451.33ft	5.21m <sup>2</sup> /56.08ft	47.14m <sup>2</sup> /507.41ft

# STUDIO 02

ARCHITECTURE



	Buildup Area	Balcony	Total Area
1-09	38.73m <sup>2</sup> /416.89ft	5.15m <sup>2</sup> /55.43ft	43.88m <sup>2</sup> /472.32ft
2/3/4/5/6/7/8/9/10-11	38.73m <sup>2</sup> /416.89ft	5.21m <sup>2</sup> /56.08ft	43.94m <sup>2</sup> /472.97ft

# STUDIO 03A

ARCHITECTURE



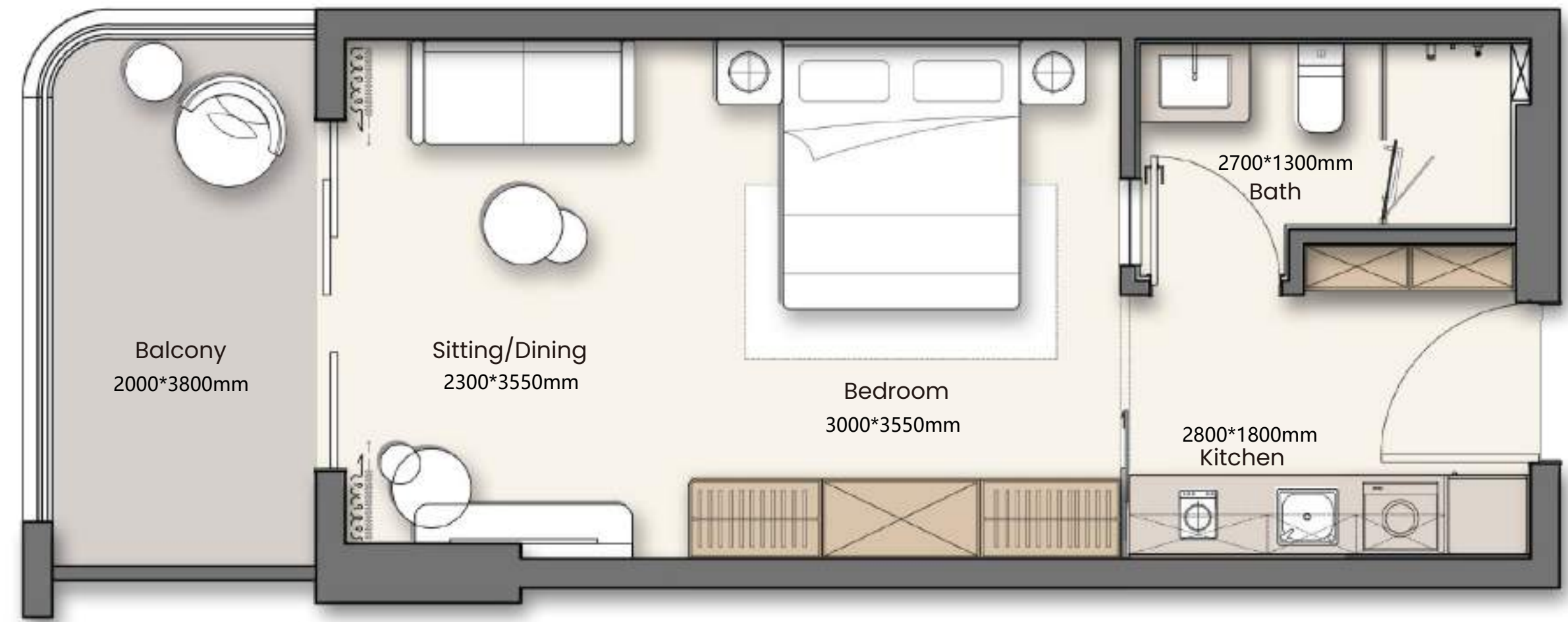
1 FLOOR



	Buildup Area	Balcony	Total Area
1-03	31.06m <sup>2</sup> /334.33ft	20.93m <sup>2</sup> /225.29ft	51.99m <sup>2</sup> /559.62ft

# STUDIO 03B

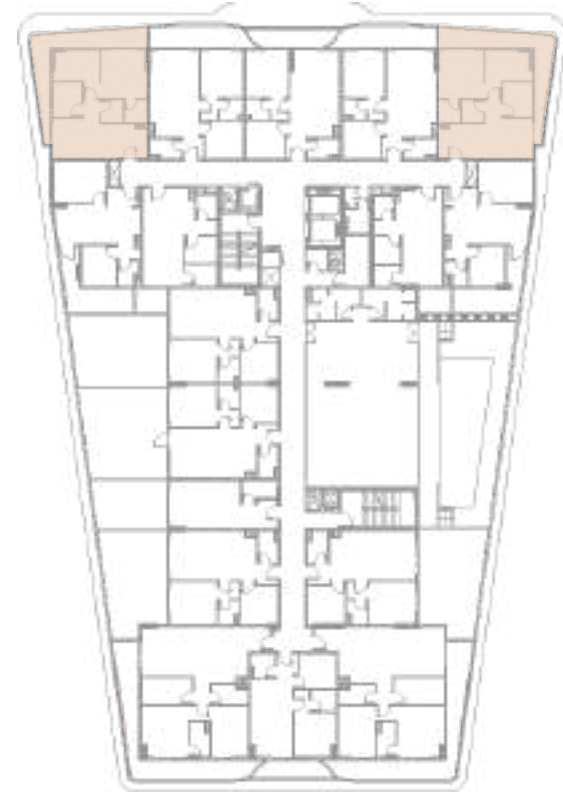
ARCHITECTURE



	Buildup Area	Balcony	Total Area
2/3/4/5/6/7/8/9/10	31.06m <sup>2</sup> /334.33ft	7.71m <sup>2</sup> /82.99ft	38.77m <sup>2</sup> /417.32ft

# 1BR 01

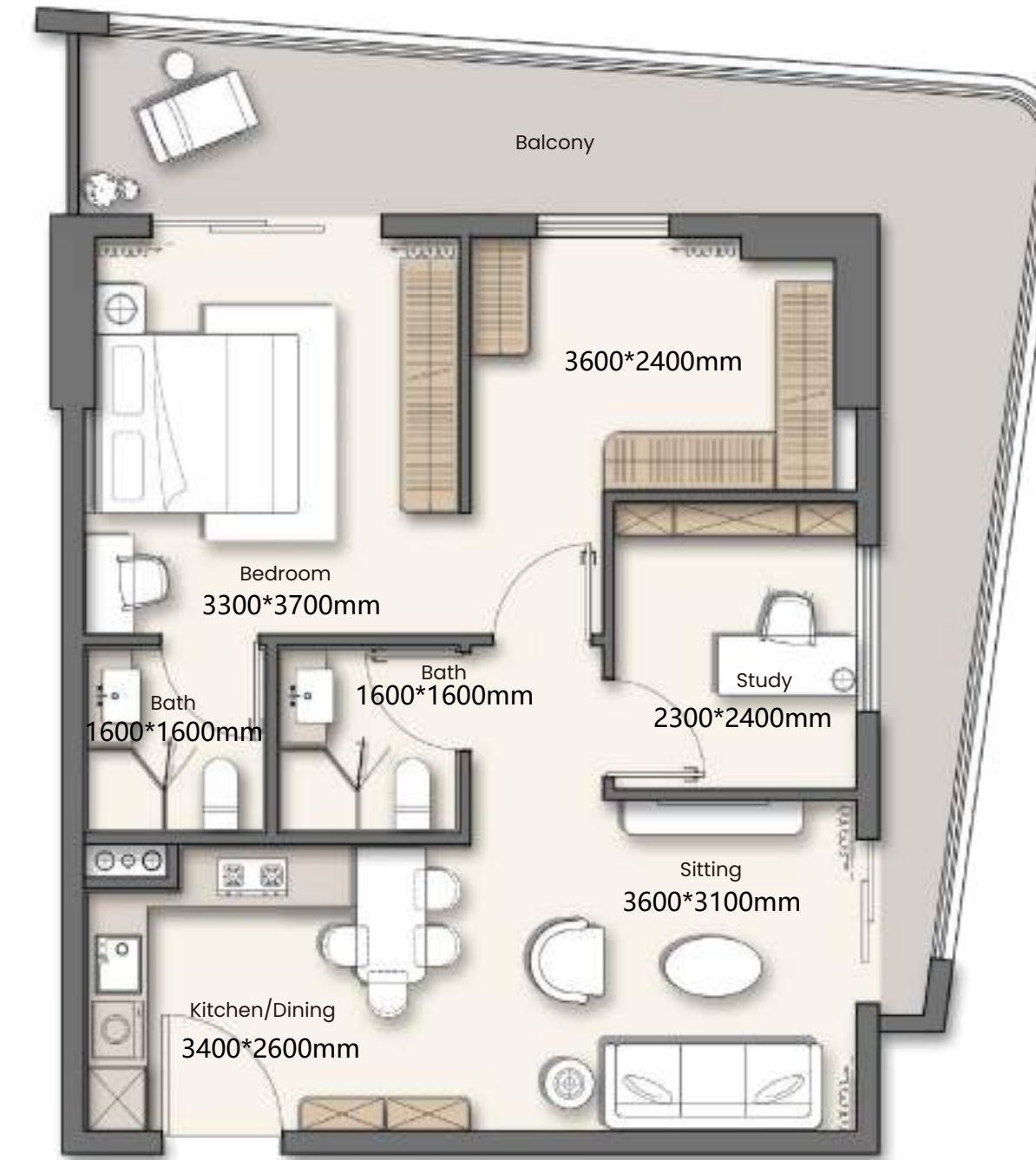
ARCHITECTURE



1 FLOOR



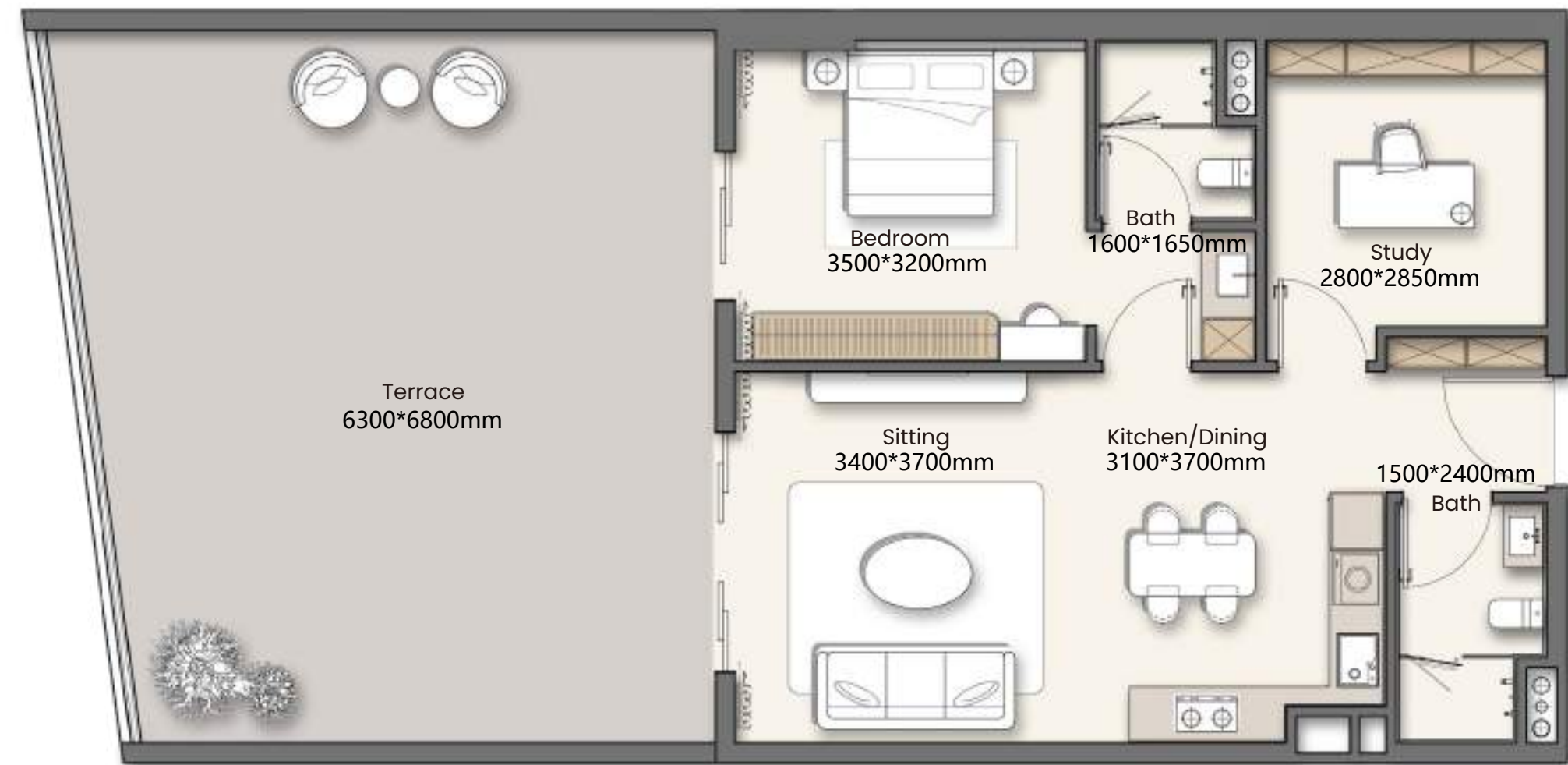
2-9 FLOOR



	Buildup Area	Balcony	Total Area
1-11/15	59.10m <sup>2</sup> /636.15ft	20.96m <sup>2</sup> /225.61ft	80.06m <sup>2</sup> /861.76ft
2/3/4/5/6/7/8/9-13	59.10m <sup>2</sup> /636.15ft	20.97m <sup>2</sup> /225.72ft	80.07m <sup>2</sup> /861.87ft
2/3/4/5/6/7/8/9-17	59.08m <sup>2</sup> /635.93ft	20.96m <sup>2</sup> /225.61ft	80.04m <sup>2</sup> /861.54ft

# 1BR 02A

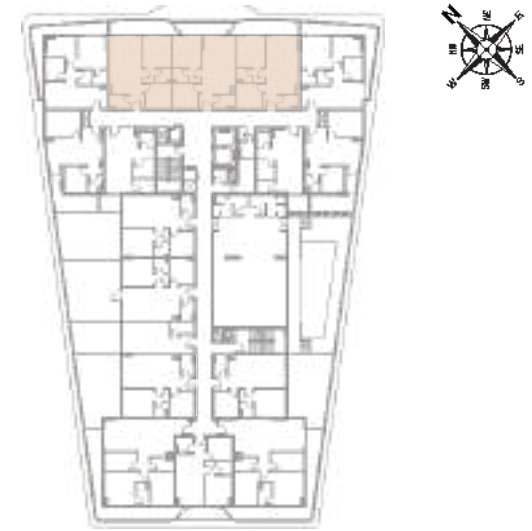
ARCHITECTURE



	Buildup Area	Balcony	Total Area
1-01	58.88m <sup>2</sup> /633.78ft	39.37m <sup>2</sup> /423.78ft	98.25m <sup>2</sup> /1057.55ft
1-02	58.77m <sup>2</sup> /632.60ft	43.75m <sup>2</sup> /470.92ft	102.52m <sup>2</sup> /1103.52ft
1-04	58.64m <sup>2</sup> /631.20ft	39.91m <sup>2</sup> /429.59ft	98.55m <sup>2</sup> /1060.78ft
1-08	58.92m <sup>2</sup> /634.21ft	37.58m <sup>2</sup> /404.51ft	96.50m <sup>2</sup> /1038.72ft

# 1 BR 02B

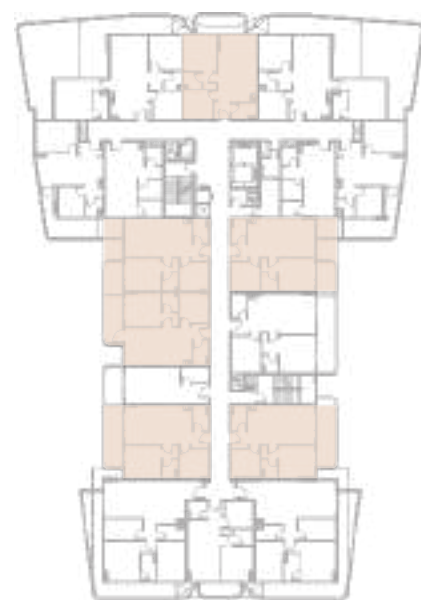
ARCHITECTURE



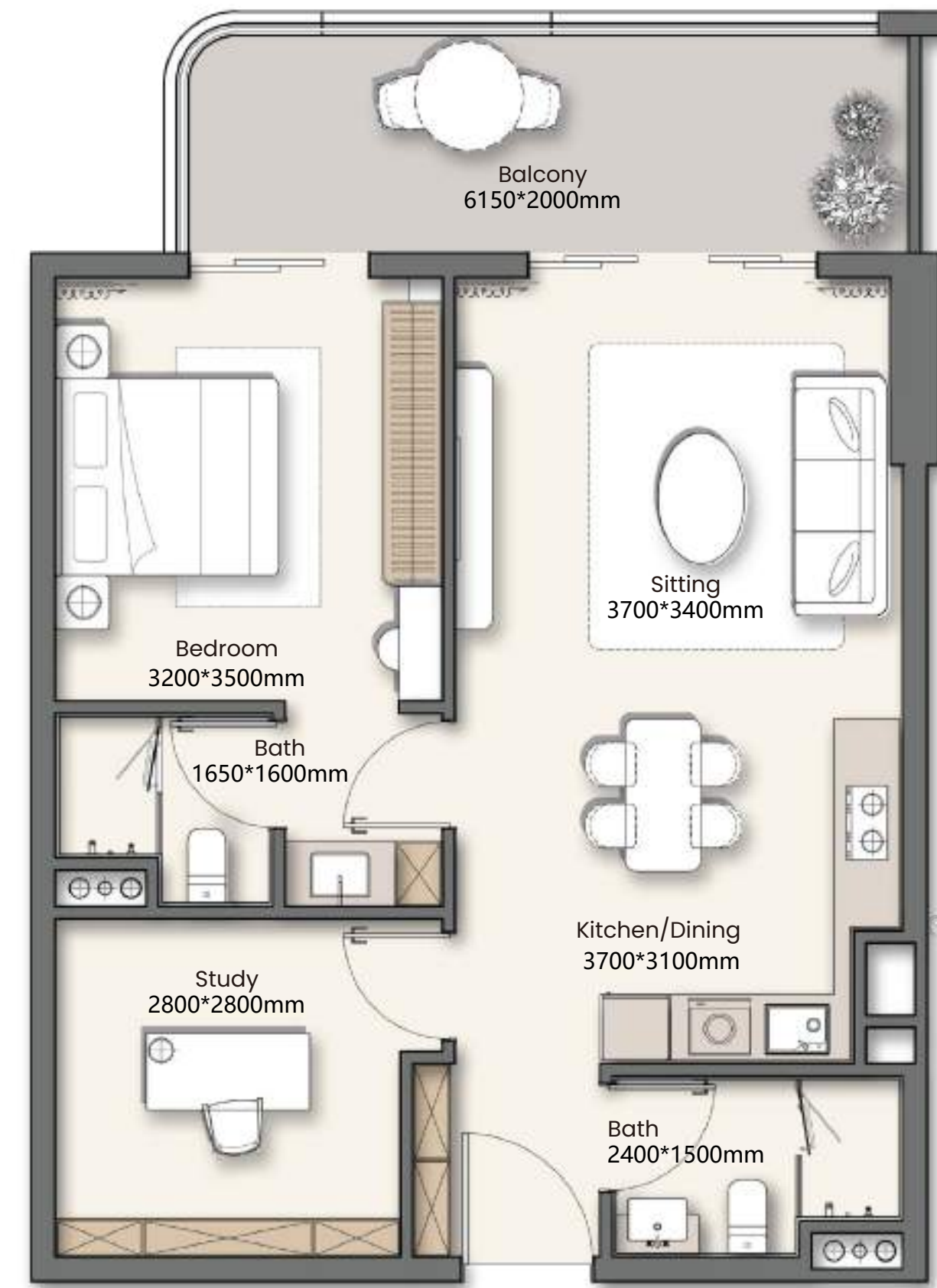
1 FLOOR



2-9 FLOOR



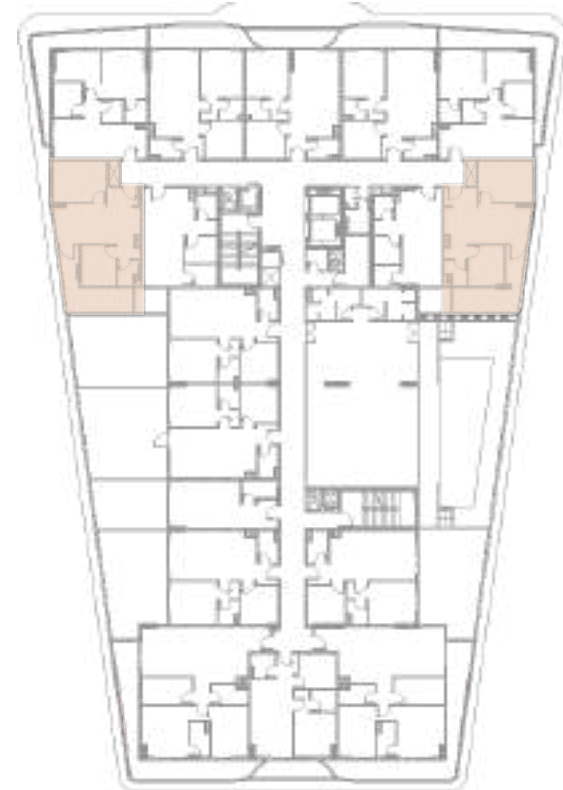
10 FLOOR



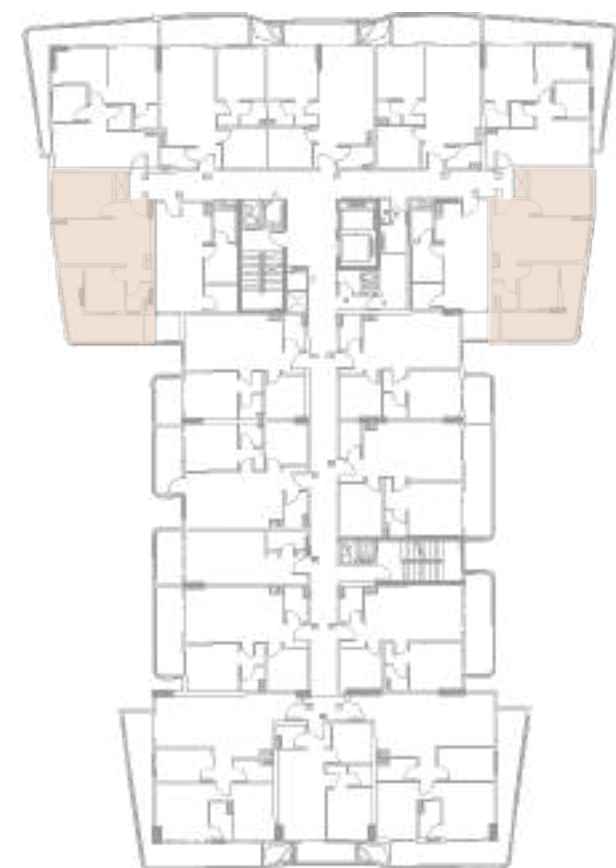
	Buildup Area	Balcony	Total Area
1-12/13/14	58.79m <sup>2</sup> /632.81ft	12.51m <sup>2</sup> /134.66ft	71.30m <sup>2</sup> /767.47ft
2/3/4/5/6/7/8/9-01/02/04/08/10/14/15/16	58.59-58.95m <sup>2</sup> /630.66-634.53ft	6.78-14.21m <sup>2</sup> /72.98-152.96ft	65.67-73.13m <sup>2</sup> /706.87-787.16ft
10-01/02/04/08/10/14	58.64-58.95m <sup>2</sup> /631.20-634.53ft	6.78-14.21m <sup>2</sup> /72.98-152.96ft	65.67-73.13m <sup>2</sup> /706.87-787.16ft

# 1BR 03

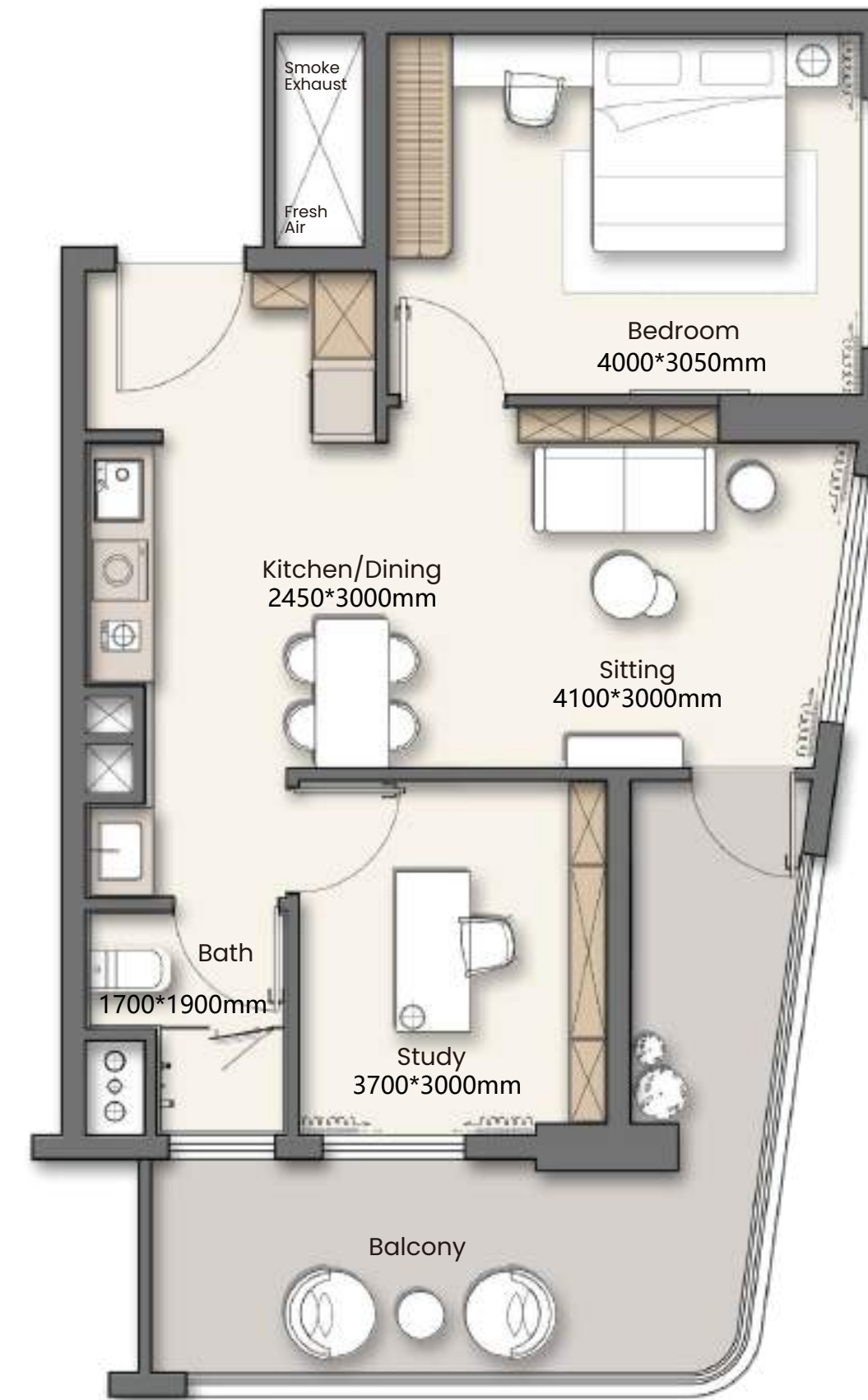
ARCHITECTURE



1 FLOOR



2-10 FLOOR



	Buildup Area	Balcony	Total Area
1-10/16	50.52m <sup>2</sup> /543.79ft	15.71m <sup>2</sup> /169.10ft	66.23m <sup>2</sup> /712.89ft
2/3/4/5/6/7/8/9-12/18	50.52m <sup>2</sup> /543.79ft	15.62m <sup>2</sup> /168.13ft	66.14m <sup>2</sup> /711.93ft
10-12/16	50.52m <sup>2</sup> /543.79ft	15.62m <sup>2</sup> /168.13ft	66.14m <sup>2</sup> /711.93ft

# 1BR 04

ARCHITECTURE



2-10 FLOOR



	Buildup Area	Balcony	Total Area
2/3/4/5/6/7/8/9/10 -09	64.49m <sup>2</sup> /694.16ft	15.70m <sup>2</sup> /168.99ft	80.19m <sup>2</sup> /863.16ft

# 1BR 05

ARCHITECTURE



2-10 FLOOR



	Buildup Area	Balcony	Total Area
1/2/3/4/5/6/7/8/9/10 -05/07	82.60m <sup>2</sup> /889.10ft	26.90m <sup>2</sup> /289.55ft	109.50m <sup>2</sup> /1178.65ft

# 1BR 06

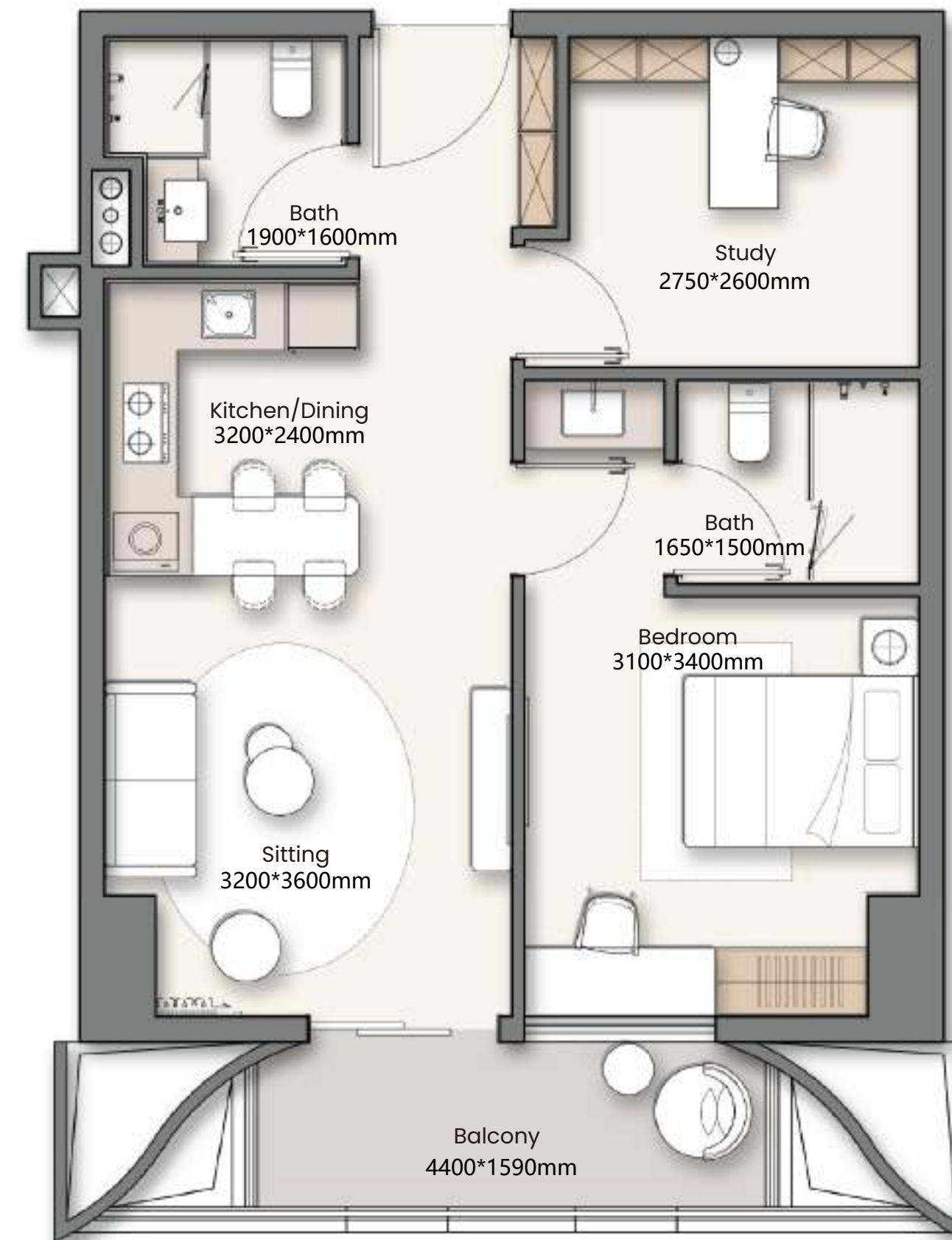
ARCHITECTURE



1 FLOOR



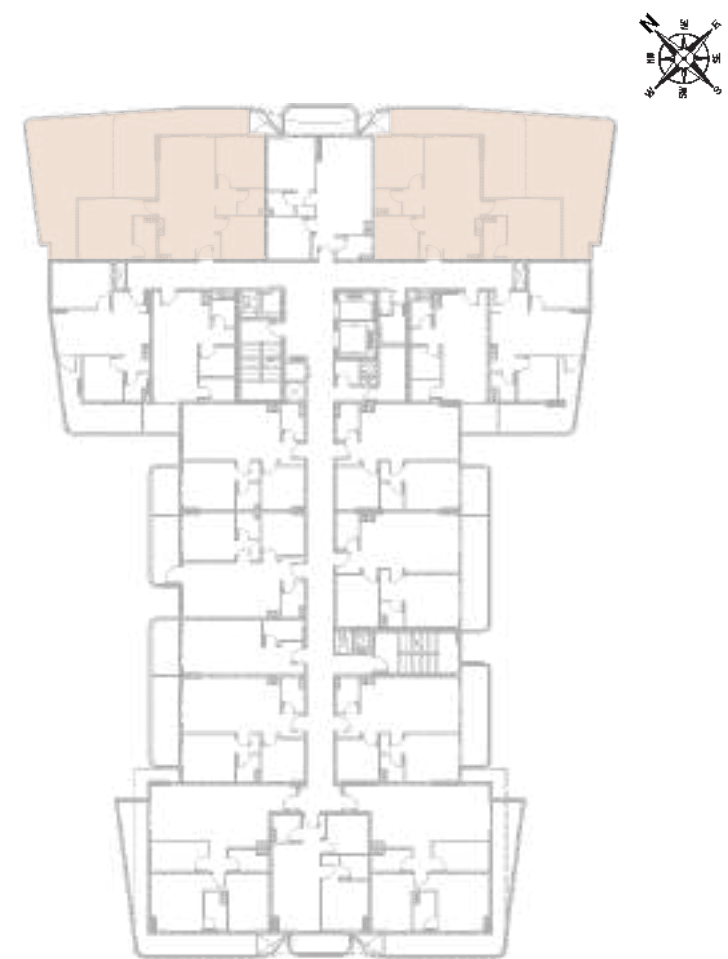
2-10 FLOOR



	Buildup Area	Balcony	Total Area
1 -06	51.42m <sup>2</sup> /553.48ft	9.14m <sup>2</sup> /98.38ft	60.56m <sup>2</sup> /651.86ft
2/3/4/5/6/7/8/9/10 -06	51.42m <sup>2</sup> /553.48ft	6.74m <sup>2</sup> /72.55ft	58.16m <sup>2</sup> /626.03ft

# 2BR 01

ARCHITECTURE



10 FLOOR

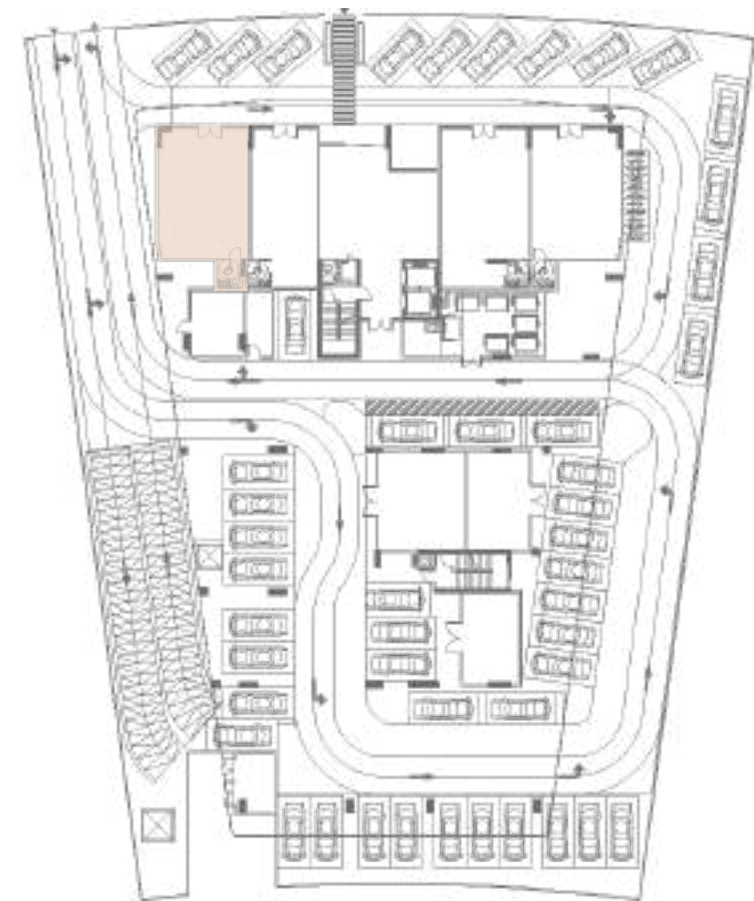


	Buildup Area	Balcony	Total Area
10 -13/15	80.30m <sup>2</sup> /864.34ft	72.19m <sup>2</sup> /777.05ft	152.49m <sup>2</sup> /1641.39ft

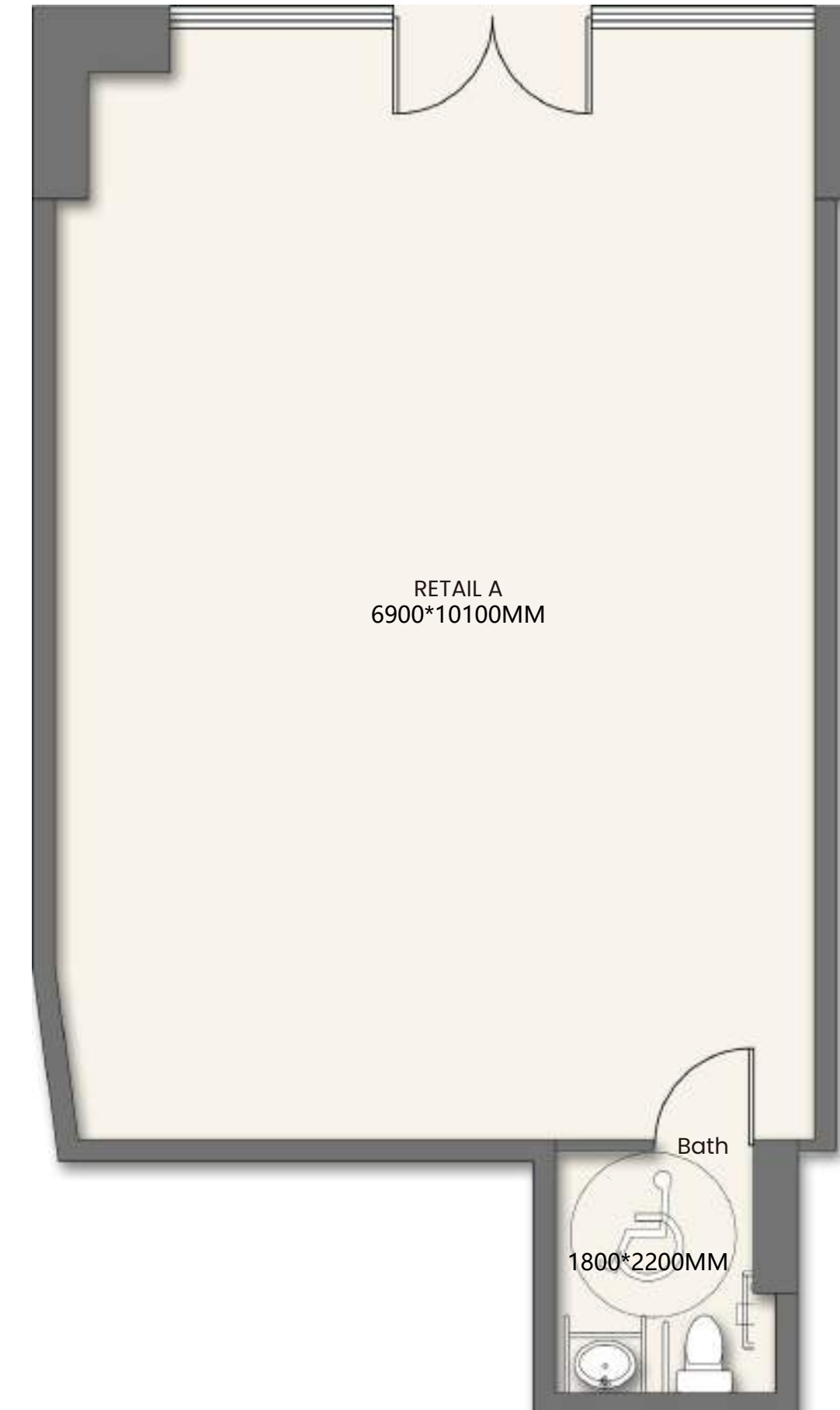
# RETAIL A

ARCHITECTURE

AREA: 78.54M<sup>2</sup> / 845.40FT



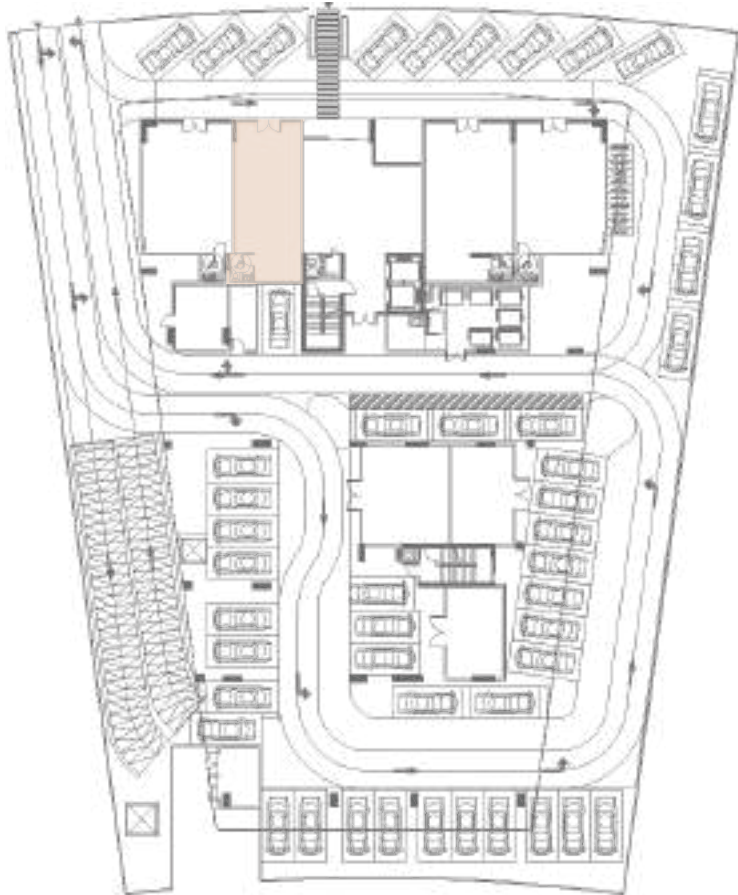
G FLOOR



# RETAIL B

ARCHITECTURE

AREA: 69.17M<sup>2</sup> / 744.54FT



G FLOOR



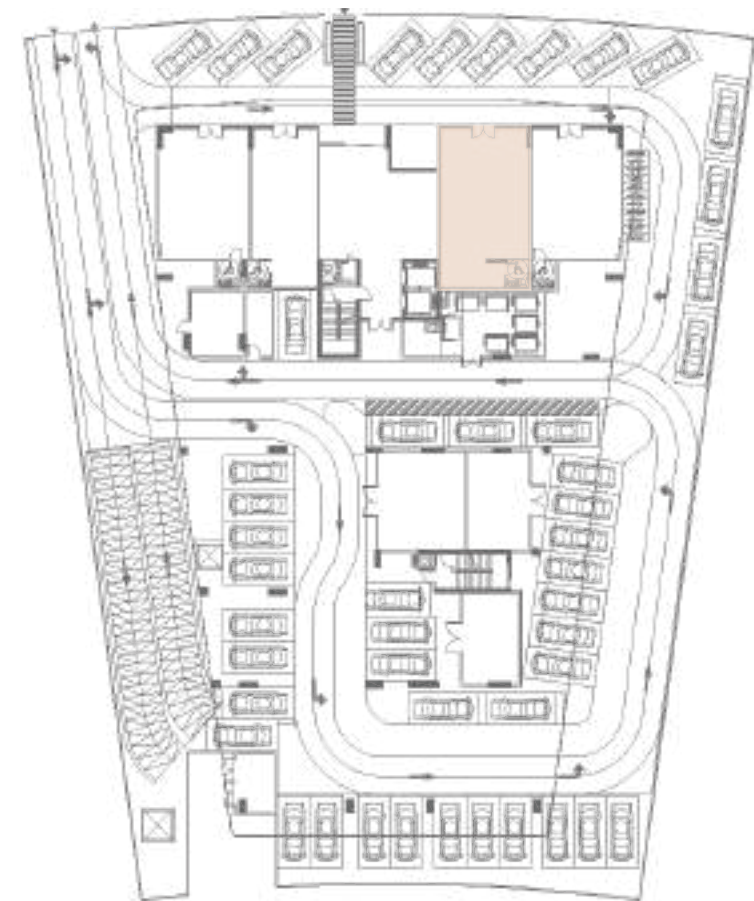
RETAIL B  
5150\*10100MM

1800\*2200MM

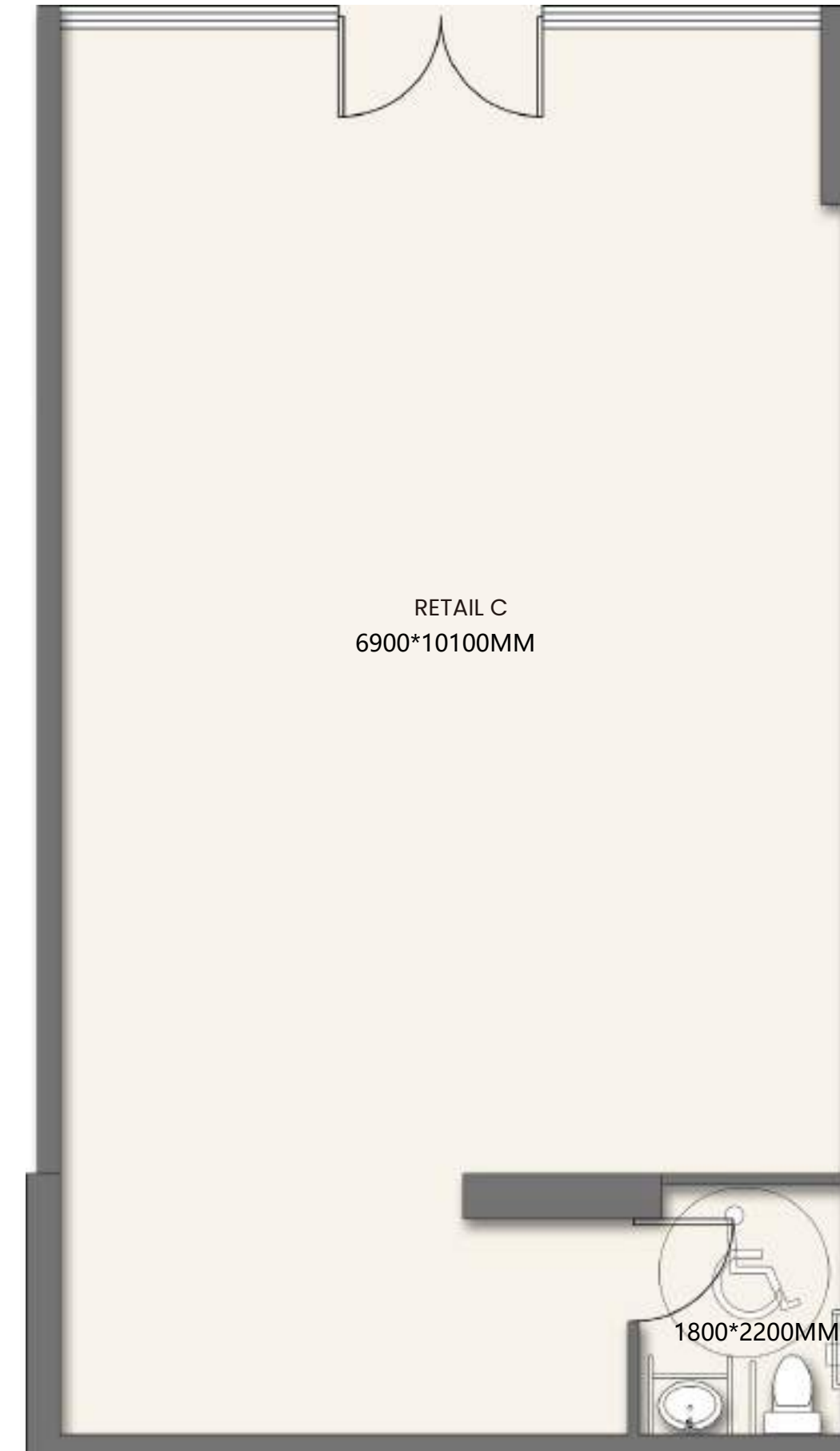
# RETAIL C

ARCHITECTURE

AREA: 89.70M<sup>2</sup> / 965.52FT



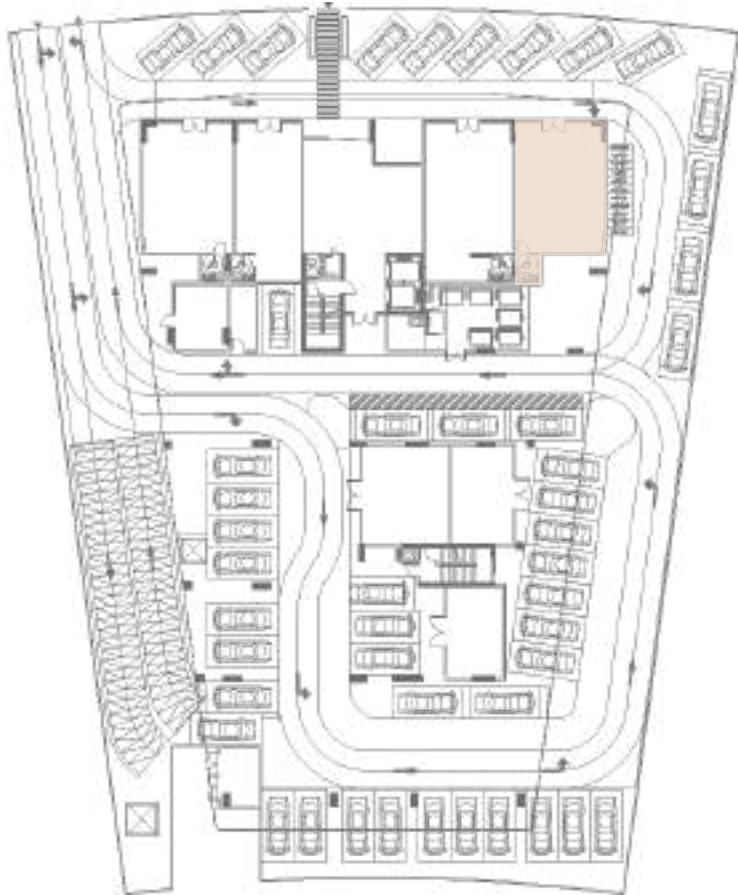
G FLOOR



# RETAIL D

ARCHITECTURE

AREA: 78.29M<sup>2</sup> / 842.71 FT



G FLOOR



# DRIVEN BY VISION. GROUNDED IN EXPERIENCE.

Building the ideal coordinates for quality of life in Dubai

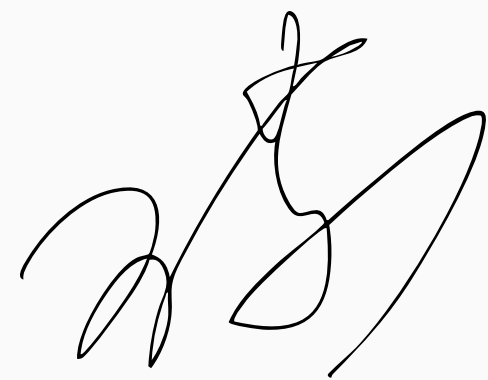
Dubai, a global metropolis known for its legend and vigour, not only attracts elite clients and investors from all over the world, but also carries the aspirations of countless Dubaiites for a high-class life. As the CEO of Yigo Group( development), I am always thinking: how can we use our expertise to create ideal homes with both living quality and investment value for this group of people who pursue excellence?

Their requirements for living are never "just enough": the ultimate in spatial design, the exquisite pursuit of living details, and the quality of high-end living in a foreign country; and for investment, they value "quality-driven value-added". For investment, they are more interested in "quality-driven appreciation" -- only quality assets that can stand the test of time can match their long-term expectations for the future.

Over the 20 years, I have visited many of our clients' homes and had in-depth dialogues with global investors. We have deeply integrated Hong Kong's cutting-edge high-end living concepts with Dubai's local needs, and turned every demand for quality and every expectation for detail into the core direction of project development. We are never satisfied with "building houses", but insist on "sculpting quality human settlements" - not only to allow residents to enjoy high-end living experiences beyond expectations, but also to allow investors to reap the benefits of quality and robust value-added returns.

We will not only let the residents enjoy a high-end living experience that exceeds their expectations, but also let the investors enjoy a steady return on their investment empowered by quality. This is the long-term mission that the Yigo team and I are committed to in Dubai, and it is also our commitment to quality.

CEO YIGO GROUP





# **YIGOC**

**DEVELOPMENTS**

[info@yigogroup.ae](mailto:info@yigogroup.ae) | [yigogroup.ae](http://yigogroup.ae)

+971 50 147 4794