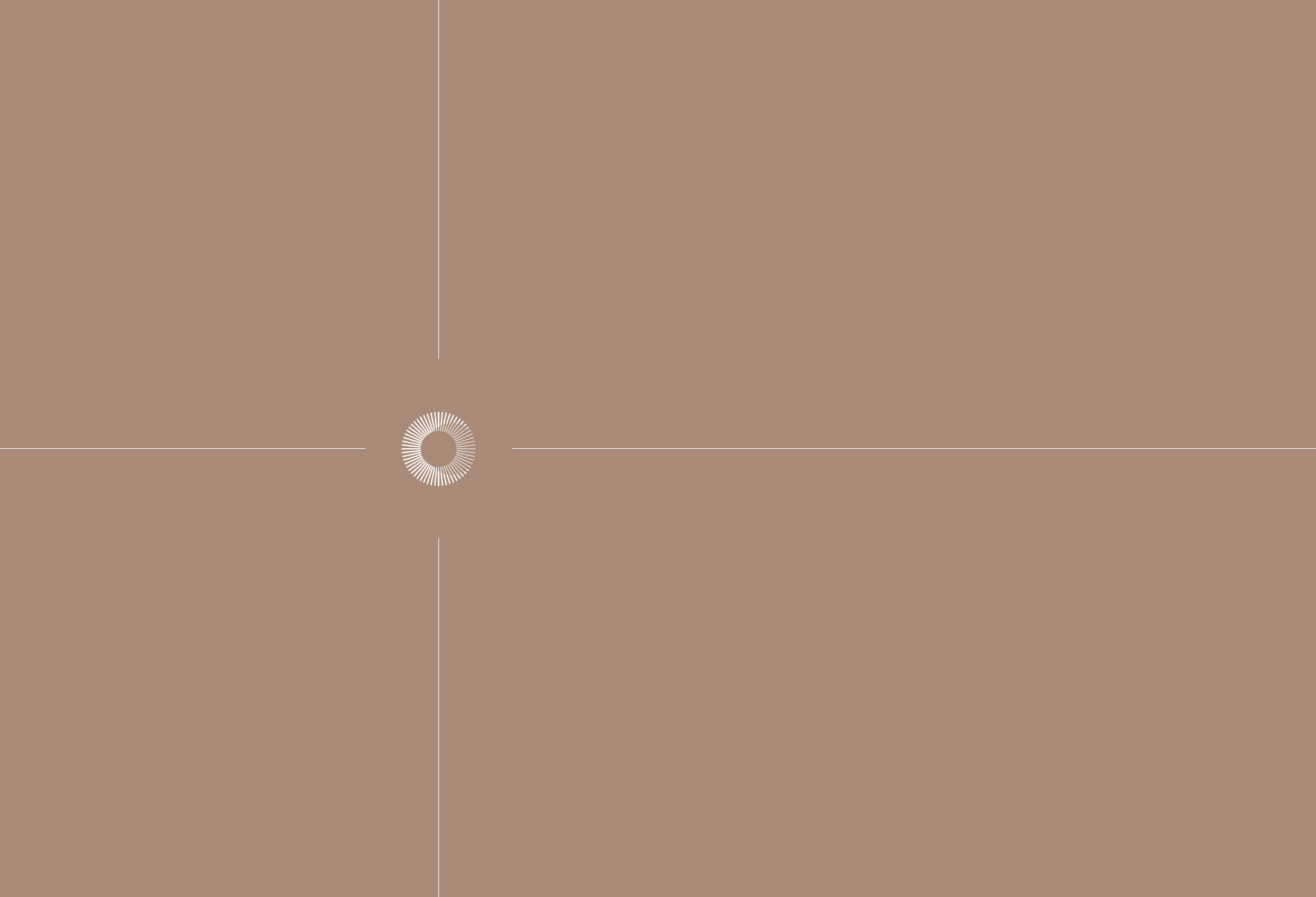


CASA
ALTIA™

By Y A S Developers



25°01'13.8"N 55°08'24.9"E

The next chapter of urban luxe.

SET IN AL FURJAN

By Y A S Developers



Palm Jumeirah

23 min



Ibn Battuta Mall

13 min



Al Furjan
Metro Station

7 min



EXPO site

13 min



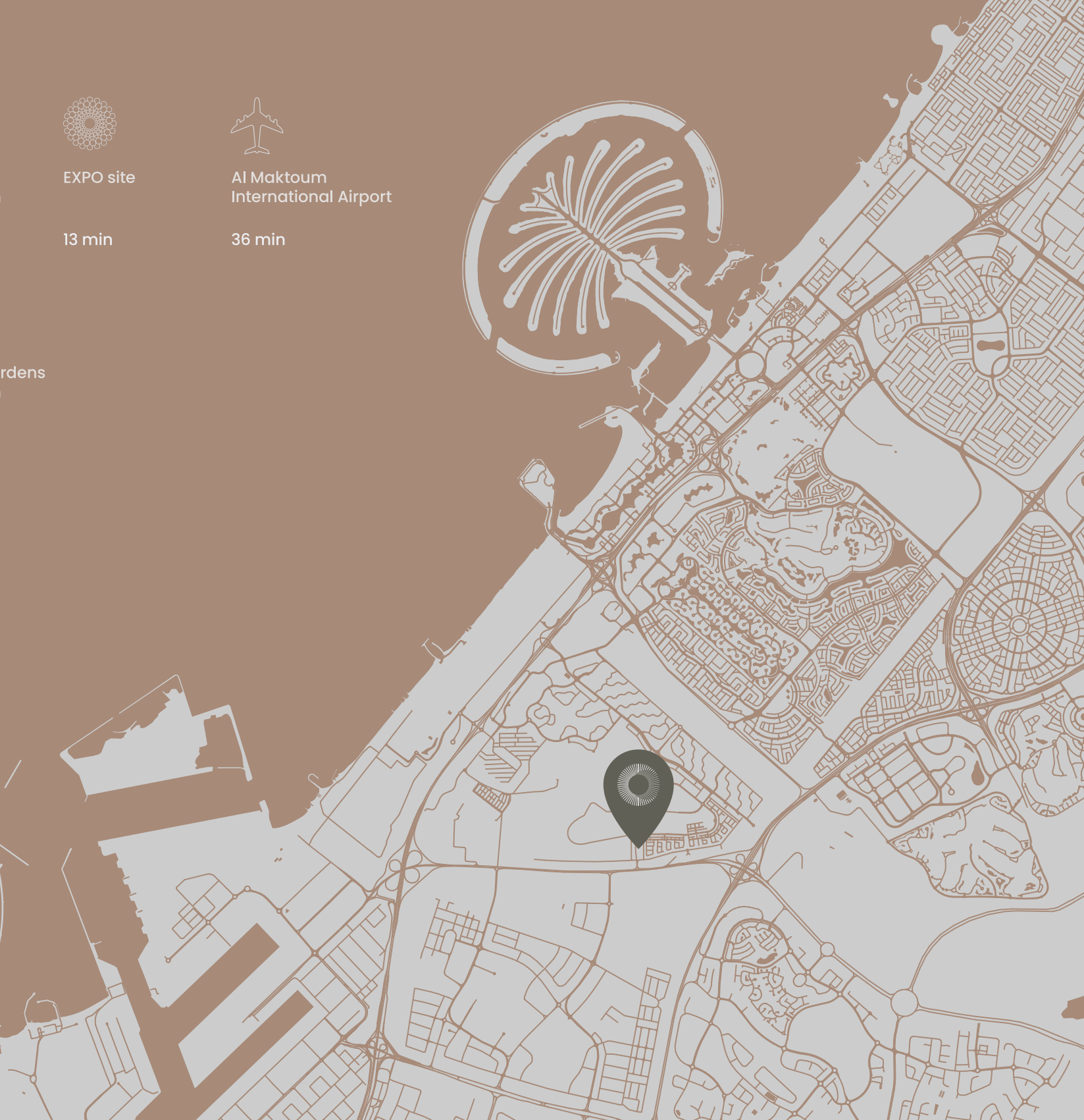
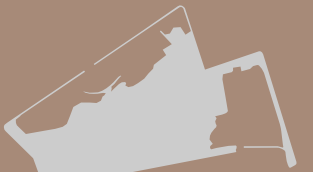
Al Maktoum
International Airport

36 min

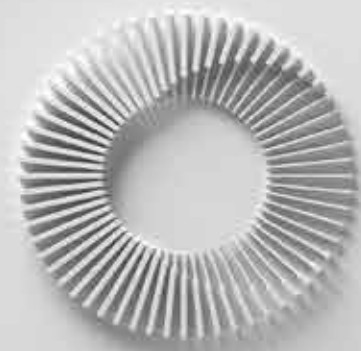


Discovery Gardens
Metro Station

8 min

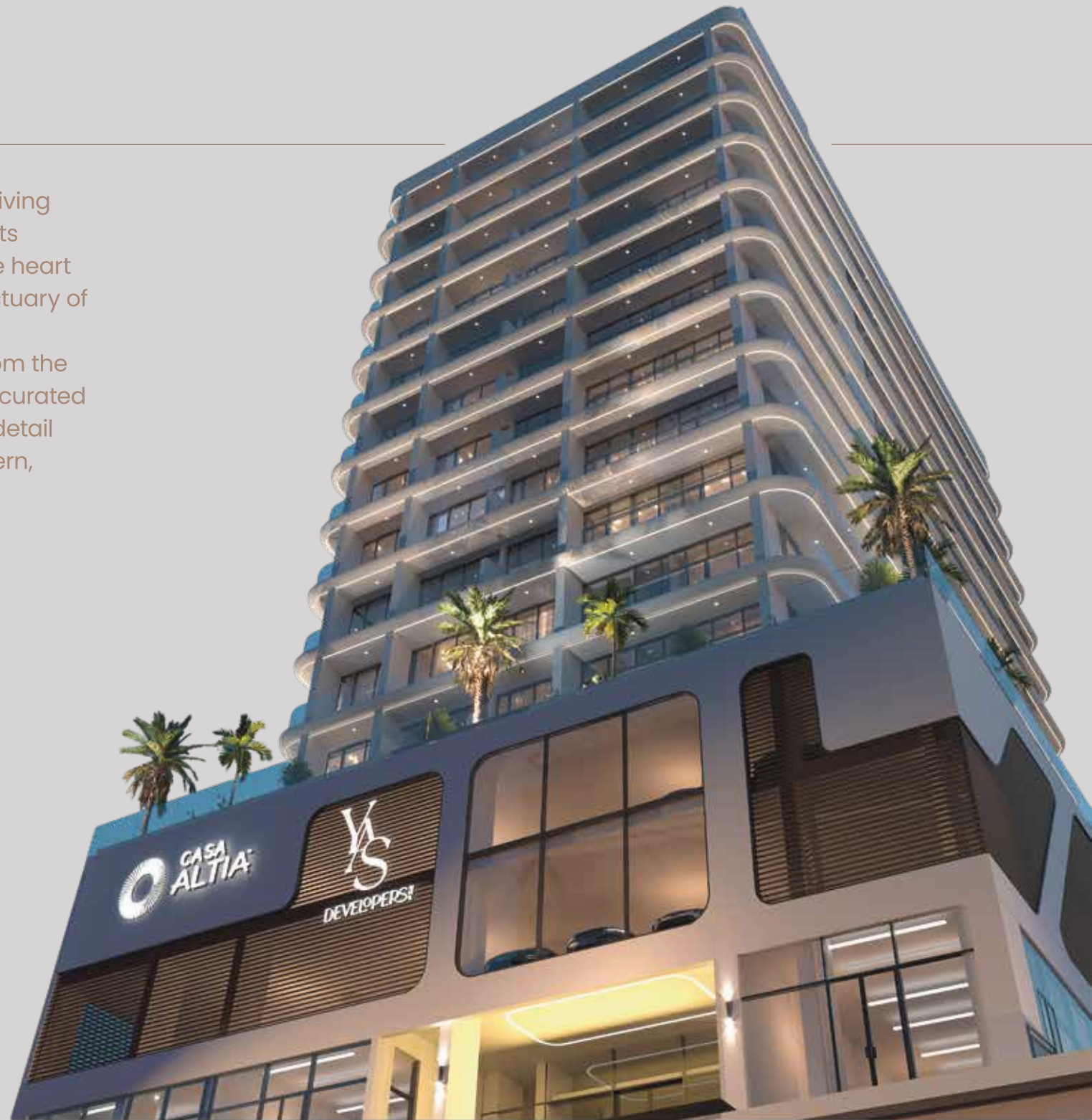


The next chapter
begins.



CASA
ALTIA™

Experience the art of elevated living where architectural purity meets expansive space. Nestled in the heart of Furjan, this address is a sanctuary of quiet sophistication, perfectly connected, yet worlds away from the noise. With bespoke amenities curated for wellness and leisure, every detail invites you to a life that is modern, effortless and truly iconic.



A chapter
layered with life.



Where first
impressions last.





CASA
ALTIA

Your quiet
moment, here.





A smooth rise
to modern living.







AMENITIES

Luxury that lives with you.

Living here means more than owning a home. It means experiencing a collection of spaces that elevate the everyday. From moments of relaxation to energizing routines and inspiring work settings every area is designed with purpose. Together, they create a lifestyle that feels complete, connected, and distinctly part of a modern landmark.

 INFINITY POOL

 THE FIT CLUB

 SAUNA

 CLUB HOUSE

 KIDS PLAY AREA

 EV CHARGING STATIONS

 GRAND ENTRANCE LOBBY



INFINITY POOL

Dive into a new
level of relaxation.









THE FIT CLUB

Push limits,
live fierce.



EAT
SLEEP
GYM
REPEAT

FITNESS ZONE



CLUB HOUSE

Your arena,
your rules.





PODIUM PARKING

Designed for
seamless access.

 **CASA
ALTIA**

YS
DEVELOPERS





THE GALLERIA

Retail,
redefined.

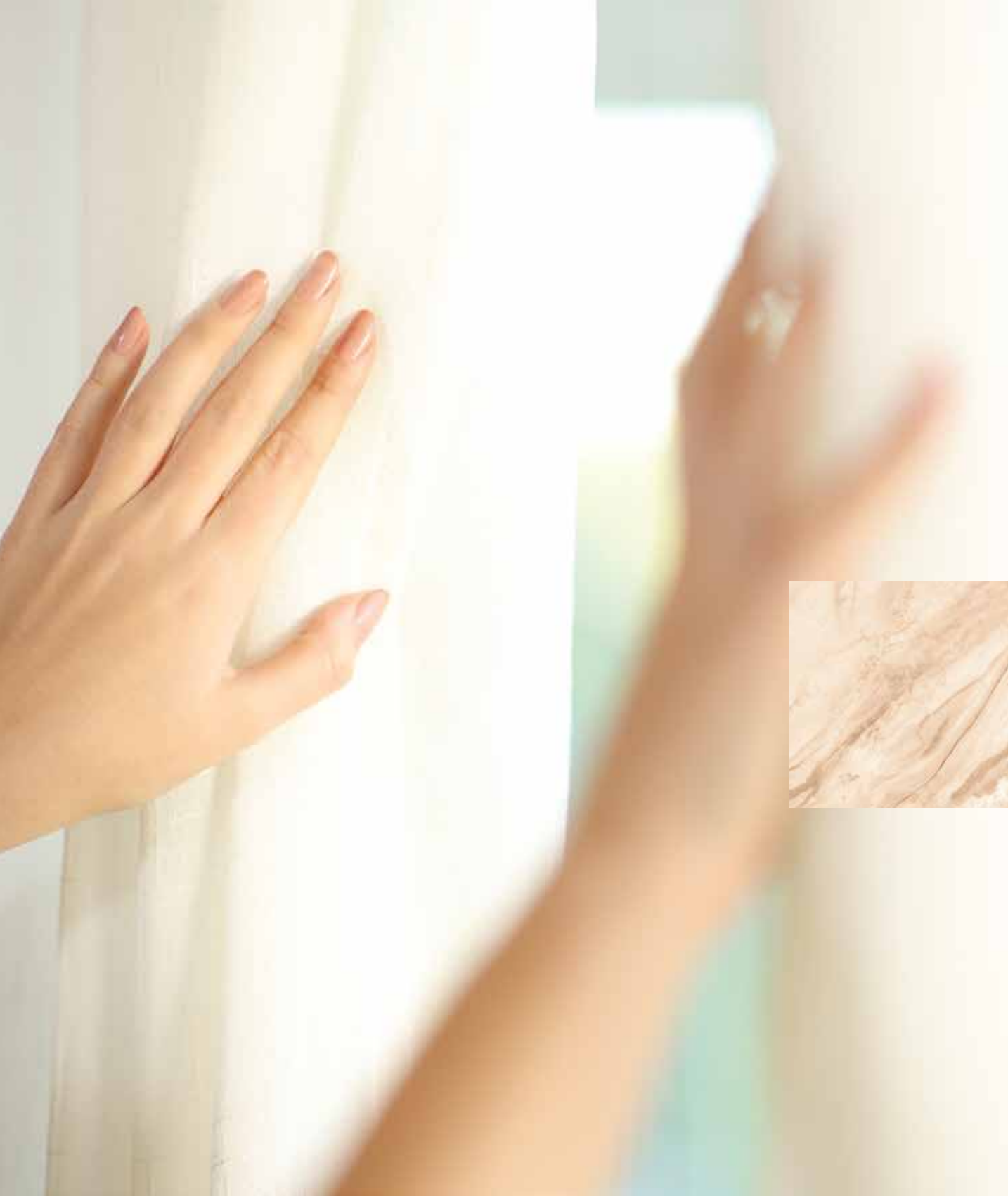


CASA
ALTIA

Y&S

DEVELOPERS





ROOFTOP AMENITIES

RESIDENCES
2 - 12 FLOOR

CASA AZUL | 1ST FLOOR

PODIUM PARKING

THE GALLERIA

Living, elevated
at every level.



ONE-BEDROOM RESIDENCES

A closer look at refined living.

The interiors are defined by clean lines, balanced proportions, and a seamless flow from room to room. Soft textures pair with modern materials to bring comfort and sophistication into daily living. High-quality finishes and trusted branded fittings ensure both beauty and durability. The overall vibe is calm, curated, and hotel-like, an elevated retreat you return to every day.





KITCHEN & DINING AREA





LIVING ROOM



BEDROOM





STUDY ROOM



BATHROOM

WALK-IN WARDROBE





1 Bedroom Residences
06 Series (2 - 12th Floor - Typical)

SUITE AREA: 816 SQ.FT
BALCONY AREA: 180 SQ.FT
TOTAL AREA: 996 SQ.FT



KEY PLAN



Disclaimer: All pictures, plans, layouts, information, data, dimensions and details included in this floor plan are indicative only and may change at any time up to the final 'as built' status in accordance with final designs of the project, regulatory approvals and planning permissions.







LIVING ROOM & DINING AREA





BEDROOM



MAID ROOM





BATHROOM



**2 Bedroom Residences - Type 1
03 Series (2 - 12th Floor - Typical)**

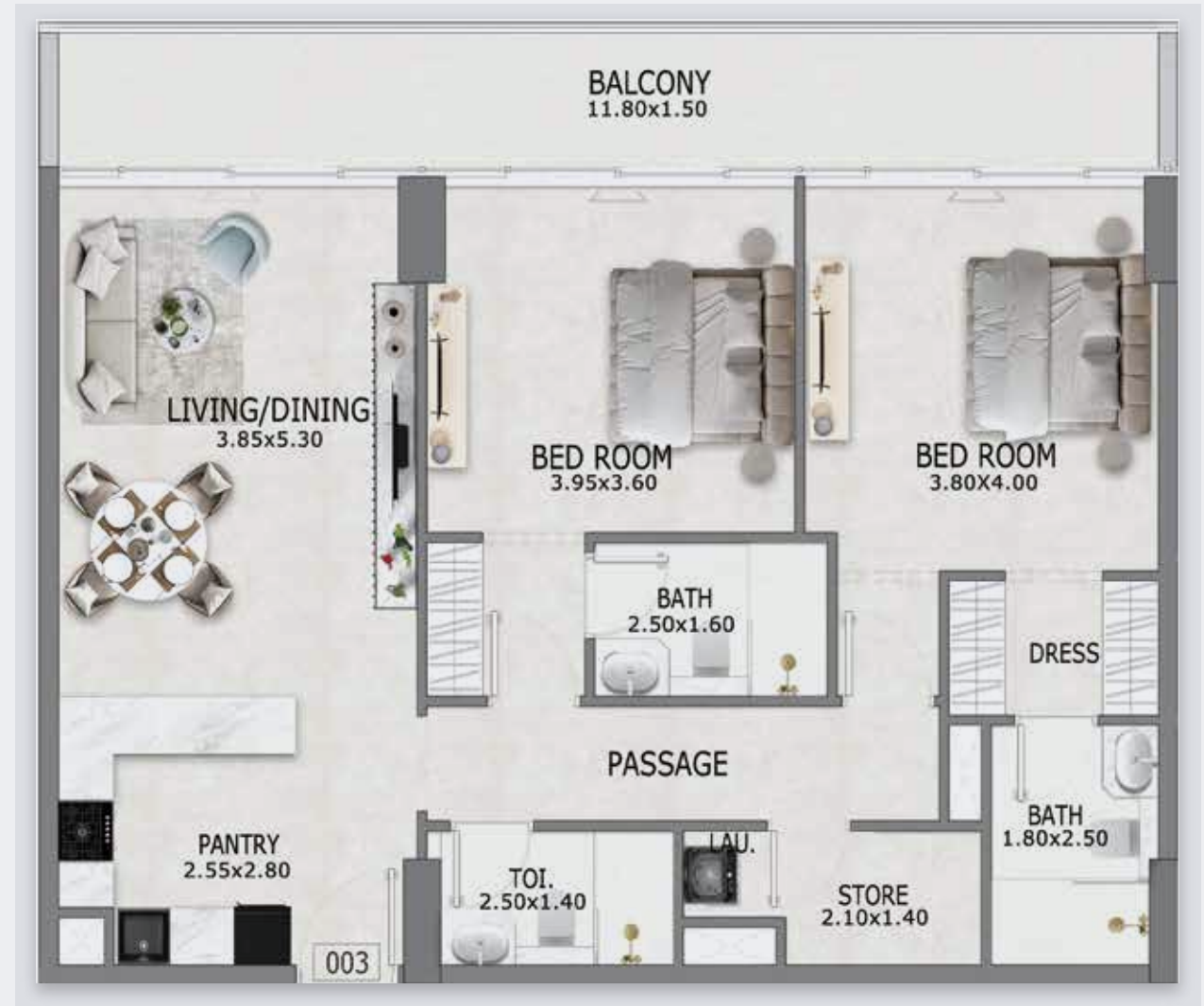
SUITE AREA: 1056 SQ.FT

BALCONY AREA: 197 SQ.FT

TOTAL AREA: 1253 SQ.FT



KEY PLAN



Disclaimer: All pictures, plans, layouts, information, data, dimensions and details included in this floor plan are indicative only and may change at any time up to the final 'as built' status in accordance with final designs of the project, regulatory approvals and planning permissions.



**2 Bedroom Residences - Type 2
02 Series (2 - 12th Floor - Typical)**

SUITE AREA: 1056 SQ.FT

BALCONY AREA: 355 SQ.FT

TOTAL AREA: 1411 SQ.FT



KEY PLAN



Disclaimer: All pictures, plans, layouts, information, data, dimensions and details included in this floor plan are indicative only and may change at any time up to the final 'as built' status in accordance with final designs of the project, regulatory approvals and planning permissions.



**2 Bedroom Residences - Type 2
05 Series (2 - 12th Floor - Typical)**

SUITE AREA: 1048 SQ.FT

BALCONY AREA: 366 SQ.FT

TOTAL AREA: 1414 SQ.FT



KEY PLAN



Disclaimer: All pictures, plans, layouts, information, data, dimensions and details included in this floor plan are indicative only and may change at any time up to the final 'as built' status in accordance with final designs of the project, regulatory approvals and planning permissions.



**2 Bedroom Residences - Type 2
01 Series (2 - 12th Floor - Typical)**

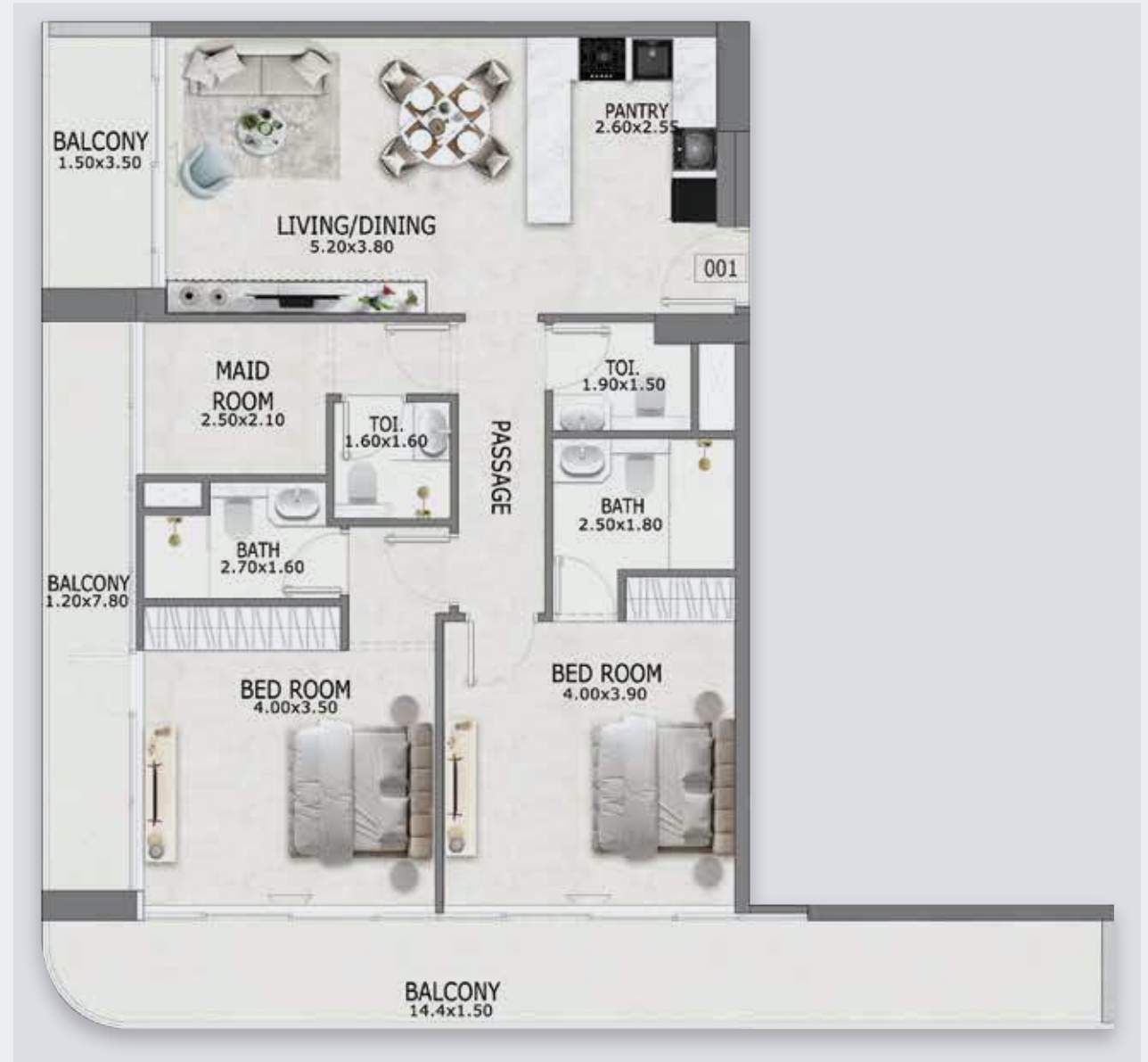
SUITE AREA: 1054 SQ.FT

BALCONY AREA: 408 SQ.FT

TOTAL AREA: 1462 SQ.FT



KEY PLAN



Disclaimer: All pictures, plans, layouts, information, data, dimensions and details included in this floor plan are indicative only and may change at any time up to the final 'as built' status in accordance with final designs of the project, regulatory approvals and planning permissions.





LIVING ROOM







KITCHEN & MAID ROOM





BEDROOM



BEDROOM & WALK-IN WARDROBE





BATHROOM



3 Bed Residences

04 Series (2 - 12th Floor - Typical)

SUITE AREA: 1449 SQ.FT

BALCONY AREA: 445 SQ.FT

TOTAL AREA: 1894 SQ.FT



KEY PLAN



Disclaimer: All pictures, plans, layouts, information, data, dimensions and details included in this floor plan are indicative only and may change at any time up to the final 'as built' status in accordance with final designs of the project, regulatory approvals and planning permissions.





Business Bay

Burj Al Arab

Palm Jumeirah

Mall of Emirates

Dubai Hills Mall

Dubai Marina

Discovery Gardens

Dubai Polo & Equestrian Club

IMG Worlds of Adventure

Global Village



ALTIMA
RESIDENCES



ALTIMA
ONE



CASA
ALTIMA

COMING
SOON



DELIVERED



DELIVERED



Following the success of Altia Residences and Altia One, YAS Developers brings its signature philosophy to a new address. Casa Altia offers a refined blend of individuality and thoughtful design. Elevated, distinctive, and crafted for you—this is the new standard in Luxury living.

A choice reserved for the few.

Because some addresses are meant to be claimed, not shared.

By Y A S Developers

25°01'13.8"N 55°08'24.9"E

800 YASDEV
927 338

YASdevelopers.com

By Y A S Developers